

For Research Use Only

GLG1 Polyclonal antibody

Catalog Number: 34250-1-AP



Basic Information

Catalog Number:

34250-1-AP

Source:

Rabbit

Isotype:

IgG

Immunogen Catalog Number:

AG41864

GenBank Accession Number:

BC060822

GeneID (NCBI):

2734

UNIPROT ID:

Q92896

Full Name:

golgi apparatus protein 1

Calculated MW:

135 kDa

Observed MW:

150 kDa

Purification Method:

Antigen affinity Purification

Recommended Dilutions:

WB: 1:1000-1:8000

IHC: 1:200-1:800

FC (Intra): 0.5 ug per 10⁶ cells in a 100 µl suspension

Applications

Tested Applications:

WB, IHC, FC (Intra), ELISA

Species Specificity:

human, mouse, rat

Note-IHC: suggested antigen retrieval with TE buffer pH 9.0; (*) Alternatively, antigen retrieval may be performed with citrate buffer pH 6.0

Positive Controls:

WB : HepG2 cells, L02 cells, SCaBER cells, SiHa cells, mouse colon tissue, rat colon tissue

IHC : mouse brain tissue,

FC (Intra) : HepG2 cells,

Background Information

Golgi apparatus protein 1 (GLG1) is also named CFR1, E-selectin ligand 1 (ESL-1) and MG160. GLG1 is a 150-160 kDa membrane sialoglycoprotein, originally isolated from the Golgi apparatus of rat neurons. Two homologs, the chicken cysteine-rich fibroblast growth factor receptor (CFR) and ESL-1, were identified in embryonic chick and murine myeloid cells, respectively (PMID: 35543162). GLG1 was originally identified as an FGF2 receptor, found in the Golgi complex (PMID:7531823). GLG1, a non-tyrosine kinase FGF receptor, is also regulated by RNA splicing (PMID: 7768993). GLG1 was found due to its significant upregulation in GC and correlation with advanced stages and lymph node metastases (PMID: 41287415).

Storage

Storage:

Store at -20°C. Stable for one year after shipment.

Storage Buffer:

PBS with 0.02% sodium azide and 50% glycerol, pH7.3

Aliquoting is unnecessary for -20°C storage

For technical support and original validation data for this product please contact:

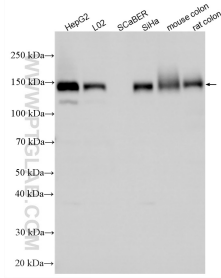
T: 4006900926

E: Proteintech-CN@ptglab.com

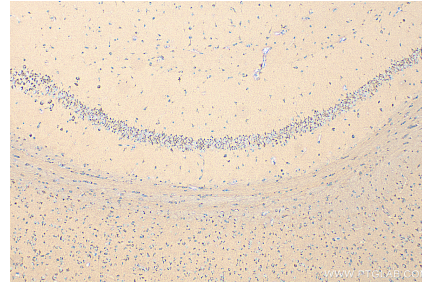
W: ptgcn.com

This product is exclusively available under Proteintech Group brand and is not available to purchase from any other manufacturer.

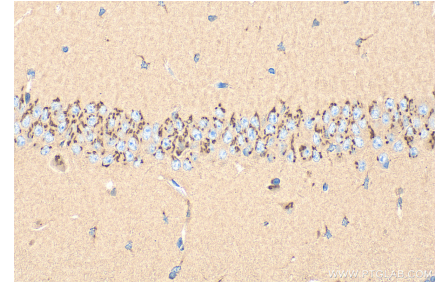
Selected Validation Data



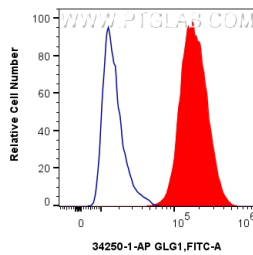
Various lysates were subjected to SDS PAGE followed by western blot with 34250-1-AP (GLG1 antibody) at dilution of 1:4000 incubated at room temperature for 1.5 hours.



Immunohistochemical analysis of paraffin-embedded mouse brain tissue slide using 34250-1-AP (GLG1 antibody) at dilution of 1:400 (under 10x lens). Heat mediated antigen retrieval with Tris-EDTA buffer (pH 9.0).



Immunohistochemical analysis of paraffin-embedded mouse brain tissue slide using 34250-1-AP (GLG1 antibody) at dilution of 1:400 (under 40x lens). Heat mediated antigen retrieval with Tris-EDTA buffer (pH 9.0).



1×10^6 HepG2 cells were intracellularly stained with 0.5 μ g GLG1 Polyclonal antibody (34250-1-AP) and CoraLite[®]488-Conjugated Goat Anti-Rabbit IgG(H+L) (SA00013-2)(red), or 0.5 μ g Isotype Control (blue). Cells were fixed and permeabilized with Intracellular Flow Cytometry Fixation & Permeabilization Buffer Kit (PF00019).