

For Research Use Only

PIWIL2 Polyclonal antibody

Catalog Number: 34244-1-AP **1 Publications**



Basic Information

Catalog Number: 34244-1-AP	GenBank Accession Number: BC025995	Purification Method: Antigen affinity Purification
Source: Rabbit	GeneID (NCBI): 55124	Recommended Dilutions: WB: 1:500-1:2000
Isotype: IgG	UNIPROT ID: Q8TC59	
Immunogen Catalog Number: AG38831	Full Name: piwi-like 2 (Drosophila)	
	Calculated MW: 110 kDa	
	Observed MW: 109 kDa	

Applications

Tested Applications: WB, ELISA	Positive Controls: WB : mouse testis tissue, rat testis tissue
Cited Applications: WB	
Species Specificity: human, mouse, rat	
Cited Species: rat	

Background Information

PIWIL2 is a protein-coding gene that belongs to the Argonaute family of proteins, specifically the Piwi subfamily. The gene shows highly biased expression, found predominantly in the adult testis, with lower levels detected in the duodenum and other tissues. But PIWIL2 is widely expressed in a variety of tumors. PIWIL2 functions as an endoribonuclease ("slicer") that plays a central role in the piRNA (PIWI-interacting RNA) pathway. Its primary role is to protect the germline genome by repressing transposable elements (mobile genetic elements or "jumping genes"), thereby preventing their mobilization which could otherwise cause mutations and disrupt gametogenesis. (PMID: 35794855, PMID: 40789164)

Notable Publications

Author	Pubmed ID	Journal	Application
Jiaqiang Wang	41141922	Burns Trauma	WB

Storage

Storage:
Store at -20°C. Stable for one year after shipment.
Storage Buffer:
PBS with 0.02% sodium azide and 50% glycerol, pH7.3
Aliquoting is unnecessary for -20°C storage

For technical support and original validation data for this product please contact:

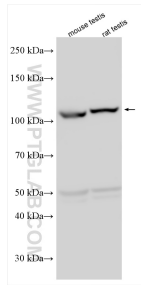
T: 4006900926

E: Proteintech-CN@ptglab.com

W: ptgcn.com

This product is exclusively available under Proteintech Group brand and is not available to purchase from any other manufacturer.

Selected Validation Data



Various lysates were subjected to SDS PAGE followed by western blot with 34244-1-AP (PIWIL2 antibody) at dilution of 1:1000 incubated at room temperature for 1.5 hours.