

For Research Use Only

CLEC4F Polyclonal antibody

Catalog Number: 34238-1-AP



Basic Information

Catalog Number:

34238-1-AP

Source:

Rabbit

Isotype:

IgG

Immunogen Catalog Number:

EG7524

GenBank Accession Number:

/

GeneID (NCBI):

51811

UNIPROT ID:

P70194

Full Name:

C-type lectin domain family 4, member f

Calculated MW:

61 kDa

Observed MW:

72 kDa

Purification Method:

Antigen affinity Purification

Recommended Dilutions:

WB: 1:500-1:2000

Applications

Tested Applications:

WB, ELISA

Species Specificity:

human, mouse, rat

Positive Controls:

WB : IMR-32 cells, mouse liver tissue, rat liver tissue

Background Information

Mouse CLEC4F (C-Type Lectin Domain Family 4 Member F) is a type II transmembrane glycoprotein primarily expressed on the surface of liver Kupffer cells, serving as a specific marker for liver-resident macrophages. As a pattern recognition receptor, CLEC4F recognizes and binds pathogen-associated sugar structures (such as fungal β -glucans and bacterial lipopolysaccharides) through its C-type lectin domain, mediating pathogen endocytosis and clearance, thereby playing a key role in the liver's innate immune defense.

Storage

Storage:

Store at -20°C. Stable for one year after shipment.

Storage Buffer:

PBS with 0.02% sodium azide and 50% glycerol, pH7.3

Aliquoting is unnecessary for -20°C storage

For technical support and original validation data for this product please contact:

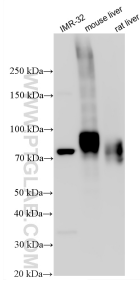
T: 4006900926

E: Proteintech-CN@ptglab.com

W: ptgcn.com

This product is exclusively available under Proteintech Group brand and is not available to purchase from any other manufacturer.

Selected Validation Data



Various lysates were subjected to SDS PAGE followed by western blot with 34238-1-AP (CLEC4F antibody) at dilution of 1:1000 incubated at room temperature for 1.5 hours.