

For Research Use Only

# JAM2 Polyclonal antibody

Catalog Number: 34226-1-AP



## Basic Information

<b>Catalog Number:</b> 34226-1-AP	<b>GenBank Accession Number:</b> NM_023844.5	<b>Purification Method:</b> Antigen affinity Purification
<b>Source:</b> Rabbit	<b>GeneID (NCBI):</b> 67374	<b>Recommended Dilutions:</b> WB: 1:500-1:1000
<b>Isotype:</b> IgG	<b>UNIPROT ID:</b> Q9JI59	IHC: 1:50-1:500 IF-P: 1:200-1:800
<b>Immunogen Catalog Number:</b> EG6328	<b>Full Name:</b> junction adhesion molecule 2	
	<b>Calculated MW:</b> 33 kDa	
	<b>Observed MW:</b> 38 kDa	

## Applications

**Tested Applications:**  
WB, IHC, IF-P, ELISA

**Species Specificity:**  
human, mouse, rat

**Note-IHC: suggested antigen retrieval with TE buffer pH 9.0; (\*) Alternatively, antigen retrieval may be performed with citrate buffer pH 6.0**

**Positive Controls:**

WB : mouse brain tissue, rat brain tissue

IHC : human placenta tissue,

IF-P: human placenta tissue,

## Background Information

Junctional adhesion molecules (JAMs) are integral membrane proteins belonging to the immunoglobulin (Ig) superfamily. JAMs are expressed by leukocytes, platelets, endothelial, and epithelial cells and localized at the tight junction of polarized cells and on the cell surface of leukocytes. JAM-2, also known as VE-JAM or JAM-B, is specifically expressed in lymphatic endothelial cells and endothelial venules. JAM2 regulates cell-cell adhesion and signaling by interacting with other tight junction proteins such as PAR-3 and ZO-1 (PMID: 14657270; 24595739; 11739175; 12953056).

## Storage

**Storage:**

Store at -20°C. Stable for one year after shipment.

**Storage Buffer:**

PBS with 0.02% sodium azide and 50% glycerol, pH7.3

Aliquoting is unnecessary for -20°C storage

For technical support and original validation data for this product please contact:

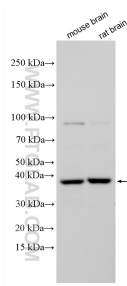
T: 4006900926

E: [Proteintech-CN@ptglab.com](mailto:Proteintech-CN@ptglab.com)

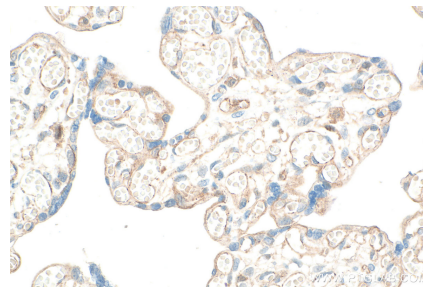
W: [ptgcn.com](http://ptgcn.com)

**This product is exclusively available under Proteintech Group brand and is not available to purchase from any other manufacturer.**

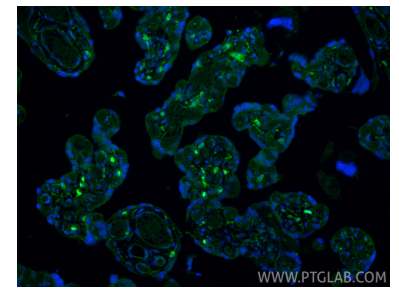
## Selected Validation Data



Various lysates were subjected to SDS PAGE followed by western blot with 34226-1-AP (JAM2 antibody) at dilution of 1:500 incubated at room temperature for 1.5 hours.



Immunohistochemical analysis of paraffin-embedded human placenta tissue slide using 34226-1-AP (JAM2 antibody) at dilution of 1:200 (under 40x lens). Heat mediated antigen retrieval with Tris-EDTA buffer (pH 9.0).



Immunofluorescent analysis of (4% PFA) fixed paraffin-embedded human placenta tissue using JAM2 antibody (34226-1-AP) at dilution of 1:400 and CoraLite®488-Conjugated Goat Anti-Rabbit IgG(H+L) (SA00013-2). Heat mediated antigen retrieval with Tris-EDTA buffer (pH 9.0).