

For Research Use Only

DOLPP1 Polyclonal antibody, PBS Only

Catalog Number: 34200-1-PBS



Basic Information

Catalog Number:

34200-1-PBS

Source:

Rabbit

Isotype:

IgG

Immunogen Catalog Number:

AG40783

GenBank Accession Number:

BC033686

GeneID (NCBI):

57171

UNIPROT ID:

Q86YN1

Full Name:

dolichyl pyrophosphate phosphatase
1

Calculated MW:

238 aa, 27 kDa

Observed MW:

22 kDa

Purification Method:

Antigen affinity Purification

Applications

Tested Applications:

WB, IHC, IF/ICC, Indirect ELISA

Species Specificity:

human

Background Information

DOLPP1 (Dolichyl Pyrophosphate Phosphatase 1) is a multiple-pass transmembrane protein localized to the endoplasmic reticulum membrane and serves as a key regulatory enzyme in the N-glycosylation pathway. This enzyme catalyzes the dephosphorylation of dolichyl pyrophosphate (Dol-PP) to generate dolichyl phosphate (Dol-P), thereby facilitating the recycling of glycosyl carrier lipids, which is essential for maintaining N-glycosylation efficiency and optimal levels of lipid-linked oligosaccharides (LLO). Deficiency of DOLPP1 leads to the accumulation of Dol-PP and depletion of Dol-P, resulting in protein glycosylation defects and endoplasmic reticulum stress. Studies have shown that DOLPP1 forms a functional network with glycosylation-related proteins such as MPDU1 and DPM1/2/3, participating in metabolic disorders associated with congenital disorders of glycosylation (CDG), and acts as an important regulator of the cellular secretory pathway and protein quality control.

Storage

Storage:

Store at -80°C.

The product is shipped with ice packs. Upon receipt, store it immediately at -80°C

Storage Buffer:

PBS only, pH7.3

For technical support and original validation data for this product please contact:

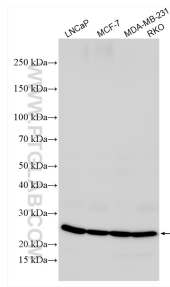
T: 4006900926

E: Proteintech-CN@ptglab.com

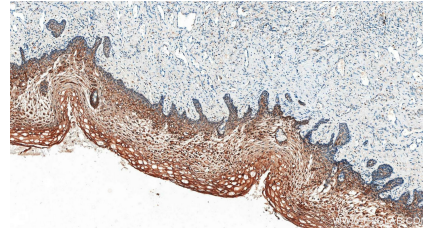
W: ptgcn.com

This product is exclusively available under Proteintech Group brand and is not available to purchase from any other manufacturer.

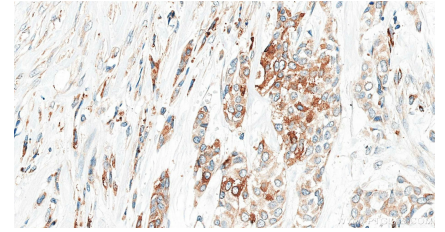
Selected Validation Data



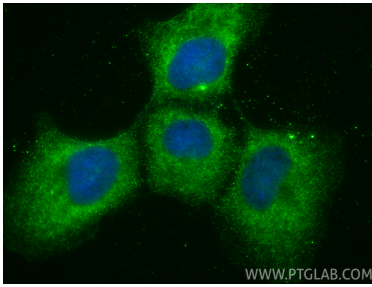
Various lysates were subjected to SDS PAGE followed by western blot with 34200-1-AP (DOLPP1 antibody) at dilution of 1:1000 incubated at room temperature for 1.5 hours. This data was developed using the same antibody clone with 34200-1-PBS in a different storage buffer formulation.



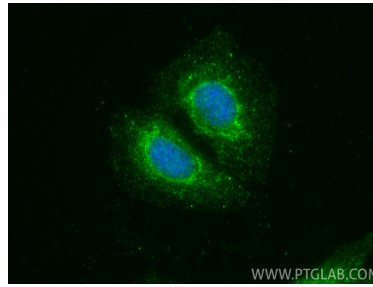
Immunohistochemical analysis of paraffin-embedded human cervical cancer tissue slide using 34200-1-AP (DOLPP1 antibody) at dilution of 1:200 (under 20x lens). Heat mediated antigen retrieval with Tris-EDTA buffer (pH 9.0). This data was developed using the same antibody clone with 34200-1-PBS in a different storage buffer formulation.



Immunohistochemical analysis of paraffin-embedded human urothelial carcinoma tissue slide using 34200-1-AP (DOLPP1 antibody) at dilution of 1:200 (under 20x lens). Heat mediated antigen retrieval with Tris-EDTA buffer (pH 9.0). This data was developed using the same antibody clone with 34200-1-PBS in a different storage buffer formulation.



Immunofluorescent analysis of (-20°C Methanol) fixed A431 cells using DOLPP1 antibody (34200-1-AP) at dilution of 1:200 and CoraLite®488-Conjugated Goat Anti-Rabbit IgG(H+L) (SA00013-2). This data was developed using the same antibody clone with 34200-1-PBS in a different storage buffer formulation.



Immunofluorescent analysis of (-20°C Ethanol) fixed U2OS cells using DOLPP1 antibody (34200-1-AP) at dilution of 1:200 and CoraLite®488-Conjugated Goat Anti-Rabbit IgG(H+L) (SA00013-2). This data was developed using the same antibody clone with 34200-1-PBS in a different storage buffer formulation.