

For Research Use Only

G2E3 Polyclonal antibody

Catalog Number: 34058-1-AP



Basic Information

| | | |
|---|--|---|
| Catalog Number: 34058-1-AP | GenBank Accession Number: BC000973 | Purification Method: Antigen affinity Purification |
| Source: Rabbit | GeneID (NCBI): 55632 | Recommended Dilutions: IP: 0.5-4.0 ug for 1.0-3.0 mg of total protein lysate IHC: 1:50-1:500 |
| Isotype: IgG | UNIPROT ID: Q7L622 | |
| Immunogen Catalog Number: AG40477 | Full Name: G2/M-phase specific E3 ubiquitin ligase | |
| | Calculated MW: 706 aa, 81 kDa | |
| | Observed MW: 80 kDa | |

Applications

Tested Applications:

IHC, IP, ELISA

Species Specificity:

human, mouse

Note-IHC: suggested antigen retrieval with TE buffer pH 9.0; (*) Alternatively, antigen retrieval may be performed with citrate buffer pH 6.0

Positive Controls:

IP: mouse brain tissue,

IHC: human kidney tissue,

Background Information

G2/M-phase specific E3 ubiquitin protein ligase (G2E3) is a cell cycle-regulated E3 ubiquitin ligase that plays a critical role in controlling the G2/M transition. It functions by targeting specific substrates for proteasomal degradation during late G2 and M phases, thereby ensuring proper cell cycle progression. G2E3 contains a RING finger domain, characteristic of E3 ubiquitin ligases, and its expression is tightly regulated in a cell cycle-dependent manner, peaking during G2/M phases. Research has implicated G2E3 in various cellular processes, including DNA damage response and mitotic regulation (PMID: 17239372; PMID: 18511420; PMID: 41068090).

Storage

Storage:

Store at -20°C. Stable for one year after shipment.

Storage Buffer:

PBS with 0.02% sodium azide and 50% glycerol, pH7.3

Aliquoting is unnecessary for -20°C storage

For technical support and original validation data for this product please contact:

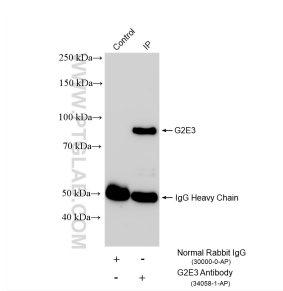
T: 4006900926

E: Proteintech-CN@ptglab.com

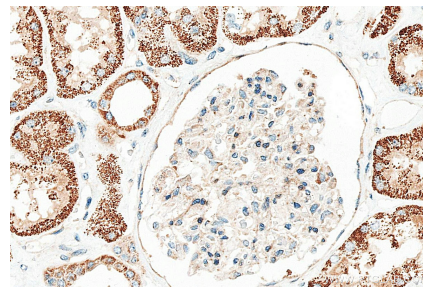
W: ptgcn.com

This product is exclusively available under Proteintech Group brand and is not available to purchase from any other manufacturer.

Selected Validation Data



IP result of anti-G2E3 (IP:34058-1-AP, 4 μ g; Detection:34058-1-AP 1:500) with mouse brain tissue lysate 1960 μ g.



Immunohistochemical analysis of paraffin-embedded human kidney tissue slide using 34058-1-AP (G2E3 antibody) at dilution of 1:200 (under 40x lens). Heat mediated antigen retrieval with Tris-EDTA buffer (pH 9.0).