

For Research Use Only

# COLEC12 Polyclonal antibody, PBS Only

Catalog Number: 34055-1-PBS



## Basic Information

Catalog Number:

34055-1-PBS

Source:

Rabbit

Isotype:

IgG

Immunogen Catalog Number:

AG39696

GenBank Accession Number:

BC060789

GeneID (NCBI):

81035

UNIPROT ID:

Q5KU26

Full Name:

collectin sub-family member 12

Calculated MW:

82 kDa

Observed MW:

140 kDa, 90 kDa, 70 kDa,

Purification Method:

Antigen affinity Purification

## Applications

Tested Applications:

WB, Indirect ELISA

Species Specificity:

human, mouse

## Background Information

Colonin-12 (COLEC12), also known as colonin subfamily member 12 or CL-P1, is a pattern recognition receptor belonging to the colonin family. As a scavenger receptor, it plays a role in innate immunity, recognizing pathogen-associated molecular patterns (PAMPs) and damaged self-components. COLEC12 plays a role in pathogen clearance, apoptotic cell recognition, and the regulation of inflammatory responses. COLEC12 is also associated with cardiovascular disease and host defense mechanisms. (PMID: 10224141; 27377710; 11564734; 24058540)

## Storage

Storage:

Store at -80°C.

**The product is shipped with ice packs. Upon receipt, store it immediately at -80°C**

Storage Buffer:

PBS only, pH7.3

For technical support and original validation data for this product please contact:

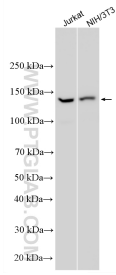
T: 4006900926

E: [Proteintech-CN@ptglab.com](mailto:Proteintech-CN@ptglab.com)

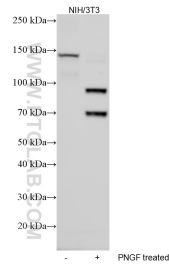
W: [ptgcn.com](http://ptgcn.com)

**This product is exclusively available under Proteintech Group brand and is not available to purchase from any other manufacturer.**

## Selected Validation Data



Various lysates were subjected to SDS PAGE followed by western blot with 34055-1-AP (COLEC 12 antibody) at dilution of 1:2000 incubated at room temperature for 1.5 hours. This data was developed using the same antibody clone with 34055-1-PBS in a different storage buffer formulation.



Various lysates were subjected to SDS PAGE followed by western blot with 34055-1-AP (COLEC 12 antibody) at dilution of 1:2000 incubated at room temperature for 1.5 hours. This data was developed using the same antibody clone with 34055-1-PBS in a different storage buffer formulation.