

For Research Use Only

# FAM119B Polyclonal antibody, PBS Only

Catalog Number:33982-1-PBS



## Basic Information

Catalog Number:

33982-1-PBS

Source:

Rabbit

Isotype:

IgG

Immunogen Catalog Number:

AG40880

GenBank Accession Number:

BC099841

GeneID (NCBI):

25895

UNIPROT ID:

Q96AZ1

Full Name:

family with sequence similarity 119, member B

Calculated MW:

226 aa, 25 kDa

Observed MW:

25-30 kDa

Purification Method:

Antigen affinity Purification

## Applications

Tested Applications:

WB, Indirect ELISA

Species Specificity:

human, mouse, rat

## Background Information

EEF1AKMT3 (also known as METTL21B or FAM119B) is a gene that encodes a member of the methyltransferase-like (METTL) protein family. This enzyme functions as a specific lysine methyltransferase, with its primary and well-characterized substrate being eukaryotic translation elongation factor 1 alpha (eEF1A).

## Storage

Storage:

Store at -80°C.

The product is shipped with ice packs. Upon receipt, store it immediately at -80°C

Storage Buffer:

PBS only, pH7.3

For technical support and original validation data for this product please contact:

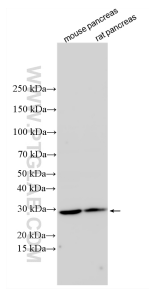
T: 4006900926

E: Proteintech-CN@ptglab.com

W: ptgcn.com

This product is exclusively available under Proteintech Group brand and is not available to purchase from any other manufacturer.

## Selected Validation Data



Various lysates were subjected to SDS PAGE followed by western blot with 33982-1-AP (FAM119B antibody) at dilution of 1:1000 incubated at room temperature for 1.5 hours. This data was developed using the same antibody clone with 33982-1-PBS in a different storage buffer formulation.