

For Research Use Only

LSM14A Polyclonal antibody

Catalog Number: 33966-1-AP



Basic Information

Catalog Number:

33966-1-AP

Source:

Rabbit

Isotype:

IgG

Immunogen Catalog Number:

AG41250

GenBank Accession Number:

BC016842

GeneID (NCBI):

26065

UNIPROT ID:

Q8ND56

Full Name:

LSM14A, SCD6 homolog A (S. cerevisiae)

Calculated MW:

463 aa, 51 kDa

Observed MW:

55 kDa

Purification Method:

Antigen affinity purification

Recommended Dilutions:

WB: 1:1000-1:6000

IF/ICC: 1:50-1:500

Applications

Tested Applications:

WB, IF/ICC, ELISA

Species Specificity:

human

Positive Controls:

WB: A549 cells, Calu-1 cells, HeLa cells, HepG2 cells, L02 cells

IF/ICC: HepG2 cells,

Background Information

LSm14A was originally discovered to be a component of the P-bodies, it is a member of the LSm family of proteins, which have been shown to be involved in RNA processing events. The N terminus of LSm14A is a conserved LSm domain, whereas the C terminus contains two domains called "DFDF box" and "FDF_TFG box", respectively.

Storage

Storage:

Store at -20°C. Stable for one year after shipment.

Storage Buffer:

PBS with 0.02% sodium azide and 50% glycerol, pH7.3

Aliquoting is unnecessary for -20°C storage

For technical support and original validation data for this product please contact:

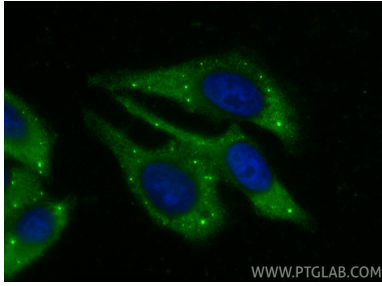
T: 4006900926

E: Proteintech-CN@ptglab.com

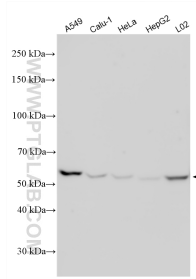
W: ptgcn.com

This product is exclusively available under Proteintech Group brand and is not available to purchase from any other manufacturer.

Selected Validation Data



Immunofluorescent analysis of (-20°C Ethanol) fixed HepG2 cells using LSM14A antibody (33966-1-AP) at dilution of 1:200 and CoraLite®488-Conjugated Goat Anti-Rabbit IgG(H+L) (SA00013-2).



Various lysates were subjected to SDS PAGE followed by western blot with 33966-1-AP (LSM14A antibody) at dilution of 1:3000 incubated at room temperature for 1.5 hours.