

For Research Use Only

# Calpain 15/SOLH Polyclonal antibody

Catalog Number: 33924-1-AP



## Basic Information

Catalog Number:

33924-1-AP

Source:

Rabbit

Isotype:

IgG

Immunogen Catalog Number:

AG40689

GenBank Accession Number:

BC021854

GeneID (NCBI):

6650

UNIPROT ID:

O75808

Full Name:

small optic lobes homolog  
(Drosophila)

Calculated MW:

117 kDa

Observed MW:

117 kDa

Purification Method:

Antigen affinity Purification

Recommended Dilutions:

WB: 1:500-1:2000

## Applications

Tested Applications:

WB, ELISA

Species Specificity:

human

Positive Controls:

WB : Jurkat cells, MCF-7 cells

## Background Information

Calpain 15 (also known as CAPN15 and SOLH) is an intracellular cysteine protease belonging to the non-classical small optic lobe (SOL) family of calpains, which plays an important role in developmental processes (PMID: 40238785). Capn15 is expressed at much higher levels during early neuronal development than in the adult (PMID: 32885237). And loss of Capn15 in forebrain excitatory neurons leads to some behavioral deficits including decreased fear generalization (PMID: 37598906).

## Storage

Storage:

Store at -20°C. Stable for one year after shipment.

Storage Buffer:

PBS with 0.02% sodium azide and 50% glycerol, pH7.3

Aliquoting is unnecessary for -20°C storage

For technical support and original validation data for this product please contact:

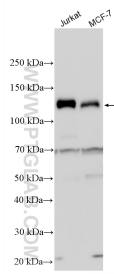
T: 4006900926

E: [Proteintech-CN@ptglab.com](mailto:Proteintech-CN@ptglab.com)

W: [ptgcn.com](http://ptgcn.com)

**This product is exclusively available under Proteintech Group brand and is not available to purchase from any other manufacturer.**

## Selected Validation Data



Various lysates were subjected to SDS PAGE followed by western blot with 33924-1-AP (Calpain 15/SOLH antibody) at dilution of 1:1000 incubated at room temperature for 1.5 hours.