

For Research Use Only

# REG3G Polyclonal antibody

Catalog Number:33895-1-AP



## Basic Information

<b>Catalog Number:</b> 33895-1-AP	<b>GenBank Accession Number:</b> BC103854	<b>Purification Method:</b> Antigen affinity Purification
<b>Source:</b> Rabbit	<b>GeneID (NCBI):</b> 130120	<b>Recommended Dilutions:</b> WB: 1:500-1:2000
<b>Isotype:</b> IgG	<b>UNIPROT ID:</b> Q6UW15	
<b>Immunogen Catalog Number:</b> AG35686	<b>Full Name:</b> regenerating islet-derived 3 gamma	
	<b>Calculated MW:</b> 19 kDa	
	<b>Observed MW:</b> 18 kDa	

## Applications

<b>Tested Applications:</b> WB, ELISA	<b>Positive Controls:</b> WB : mouse pancreas tissue,
<b>Species Specificity:</b> human, mouse	

## Background Information

REG3G (Regenerating Islet-Derived 3 Gamma) is a small intestinal C-type lectin-like antimicrobial peptide mainly secreted by Paneth cells. First identified in regenerating pancreas, it is now recognized as a key defender of the gut barrier: it kills Gram-positive bacteria, limits bacterial contact with the epithelium, and thus helps prevent systemic inflammation and metabolic disease. Beyond its antimicrobial role, REG3G acts as a gut-derived hormone that links the intestinal microbiome to host metabolism. Its expression is boosted by dietary fiber, beneficial bacteria, interleukin-22 (IL-22) and bariatric surgery, and it reciprocally improves glucose control, reduces hepatic steatosis, accelerates wound healing and protects pancreatic  $\beta$ -cells by activating the JAK2/STAT3 pathway. Conversely, chronic alcohol intake or dysbiosis lowers REG3G levels, weakening the gut barrier and promoting alcoholic liver disease.

## Storage

**Storage:**  
Store at -20°C. Stable for one year after shipment.  
**Storage Buffer:**  
PBS with 0.02% sodium azide and 50% glycerol, pH7.3  
Aliquoting is unnecessary for -20°C storage

For technical support and original validation data for this product please contact:

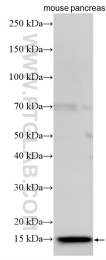
T: 4006900926

E: [Proteintech-CN@ptglab.com](mailto:Proteintech-CN@ptglab.com)

W: [ptgcn.com](http://ptgcn.com)

**This product is exclusively available under Proteintech Group brand and is not available to purchase from any other manufacturer.**

## Selected Validation Data



Various lysates were subjected to SDS PAGE followed by western blot with 33895-1-AP (REG3G antibody) at dilution of 1:1000 incubated at room temperature for 1.5 hours.