

For Research Use Only

# RAP2C Polyclonal antibody, PBS Only

Catalog Number:33845-1-PBS



## Basic Information

<b>Catalog Number:</b> 33845-1-PBS	<b>GenBank Accession Number:</b> BC003403	<b>Purification Method:</b> Antigen affinity Purification
<b>Source:</b> Rabbit	<b>GeneID (NCBI):</b> 57826	
<b>Isotype:</b> IgG	<b>UNIPROT ID:</b> Q9Y3L5	
<b>Immunogen Catalog Number:</b> AG38723	<b>Full Name:</b> RAP2C, member of RAS oncogene family	
	<b>Calculated MW:</b> 20 kDa	
	<b>Observed MW:</b> 20 kDa	

## Applications

**Tested Applications:**  
WB, Indirect ELISA

**Species Specificity:**  
human

## Background Information

RAP2C is a member of the Ras superfamily, which is the promoter of tumorigenesis. RAP2C plays a key role in the migration and invasion of various tumors, such as osteosarcoma, glioma, and small cell lung cancer (SCLC).(PMID: 29552178; PMID: 32341653; PMID: 33302819)

## Storage

**Storage:**  
Store at -80°C.  
**The product is shipped with ice packs. Upon receipt, store it immediately at -80°C**

**Storage Buffer:**  
PBS only, pH7.3

For technical support and original validation data for this product please contact:

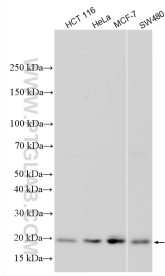
T: 4006900926

E: [Proteintech-CN@ptglab.com](mailto:Proteintech-CN@ptglab.com)

W: [ptgcn.com](http://ptgcn.com)

**This product is exclusively available under Proteintech Group brand and is not available to purchase from any other manufacturer.**

## Selected Validation Data



Various lysates were subjected to SDS PAGE followed by western blot with 33845-1-AP (RAP2C antibody) at dilution of 1:2000 incubated at room temperature for 1.5 hours. This data was developed using the same antibody clone with 33845-1-PBS in a different storage buffer formulation.