

For Research Use Only

# RAP2C Polyclonal antibody

Catalog Number:33845-1-AP



## Basic Information

|   |   |  |
|---|---|--|
| <b>Catalog Number:</b><br>33845-1-AP        | <b>GenBank Accession Number:</b><br>BC003403              | <b>Purification Method:</b><br>Antigen affinity Purification |
| <b>Source:</b><br>Rabbit                    | <b>GeneID (NCBI):</b><br>57826                            | <b>Recommended Dilutions:</b><br>WB: 1:1000-1:4000           |
| <b>Isotype:</b><br>IgG                      | <b>UNIPROT ID:</b><br>Q9Y3L5                              |  |
| <b>Immunogen Catalog Number:</b><br>AG38723 | <b>Full Name:</b><br>RAP2C, member of RAS oncogene family |  |
|   | <b>Calculated MW:</b><br>20 kDa                           |  |
|   | <b>Observed MW:</b><br>20 kDa                             |  |

## Applications

|  |   |
|--|---|
| <b>Tested Applications:</b><br>WB, ELISA | <b>Positive Controls:</b><br>WB : HCT 116 cells, HeLa cells, MCF-7 cells, SW480 cells |
| <b>Species Specificity:</b><br>human     |   |

## Background Information

RAP2C is a member of the Ras superfamily, which is the promoter of tumorigenesis. RAP2C plays a key role in the migration and invasion of various tumors, such as osteosarcoma, glioma, and small cell lung cancer (SCLC).(PMID: 29552178; PMID: 32341653; PMID: 33302819)

## Storage

**Storage:**  
Store at -20°C. Stable for one year after shipment.  
**Storage Buffer:**  
PBS with 0.02% sodium azide and 50% glycerol, pH7.3  
Aliquoting is unnecessary for -20°C storage

For technical support and original validation data for this product please contact:

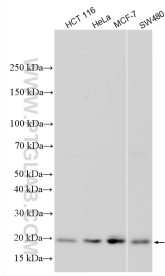
T: 4006900926

E: [Proteintech-CN@ptglab.com](mailto:Proteintech-CN@ptglab.com)

W: [ptgcn.com](http://ptgcn.com)

**This product is exclusively available under Proteintech Group brand and is not available to purchase from any other manufacturer.**

## Selected Validation Data



Various lysates were subjected to SDS PAGE followed by western blot with 33845-1-AP (RAP2C antibody) at dilution of 1:2000 incubated at room temperature for 1.5 hours.