

For Research Use Only

MAGEL2 Polyclonal antibody, PBS Only

Catalog Number:33836-1-PBS



Basic Information

Catalog Number:

33836-1-PBS

Source:

Rabbit

Isotype:

IgG

Immunogen Catalog Number:

AG39140

GenBank Accession Number:

NM_019066.4

GeneID (NCBI):

54551

UNIPROT ID:

Q9UJ55

Full Name:

MAGE-like 2

Calculated MW:

133kDa, 1249aa

Purification Method:

Antigen affinity Purification

Applications

Tested Applications:

IHC, Indirect ELISA

Species Specificity:

human, mouse

Background Information

MAGEL2 exerts pleiotropic functions in the human body, particularly because of its role in the hypothalamus, a brain region at the centre of organismal homeostasis that is critical for both individual and species success. In mouse models, MAGEL2 regulates the cell cycle, neuronal signal transduction, neurite growth, and muscle function. Because the maternal genetic region is silenced through methylation, all classes of mutations in the maternal MAGEL2 allele are clinically insignificant. However, pathogenic mutations on the paternal allele, which is expressed, are detrimental to neural and muscular development and are responsible for a number of human syndromes.(PMID: 31397880,PMID: 38950199)

Storage

Storage:

Store at -80°C.

The product is shipped with ice packs. Upon receipt, store it immediately at -80°C

Storage Buffer:

PBS only, pH7.3

For technical support and original validation data for this product please contact:

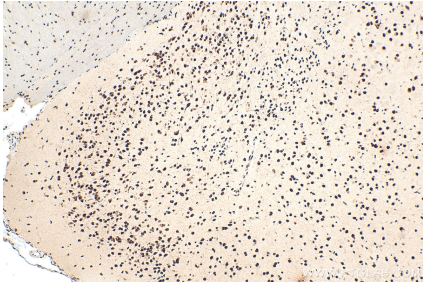
T: 4006900926

E: Proteintech-CN@ptglab.com

W: ptgcn.com

This product is exclusively available under Proteintech Group brand and is not available to purchase from any other manufacturer.

Selected Validation Data



Immunohistochemical analysis of paraffin-embedded mouse brain tissue slide using 33836-1-AP (MAGEL2 antibody) at dilution of 1:200 (under 10x lens). Heat mediated antigen retrieval with Tris-EDTA buffer (pH 9.0). This data was developed using the same antibody clone with 33836-1-PBS in a different storage buffer formulation.