

For Research Use Only

METTL10 Polyclonal antibody

Catalog Number: 33763-1-AP



Basic Information

Catalog Number: 33763-1-AP	GenBank Accession Number: BC026167	Purification Method: Antigen affinity Purification
Source: Rabbit	GeneID (NCBI): 399818	Recommended Dilutions: WB: 1:500-1:3000
Isotype: IgG	UNIPROT ID: Q5JPI9	IHC: 1:200-1:500 IF/ICC: 1:200-1:800
Immunogen Catalog Number: AG37000	Full Name: methyltransferase like 10	
	Observed MW: 26 kDa	

Applications

Tested Applications:
WB, IHC, IF/ICC, ELISA

Species Specificity:
human, mouse

Note-IHC: suggested antigen retrieval with TE buffer pH 9.0; (*) Alternatively, antigen retrieval may be performed with citrate buffer pH 6.0

Positive Controls:

WB : A431 cells, DU 145 cells, Daudi cells, Raji cells
IHC : mouse brain tissue,
IF/ICC : A431 cells,

Background Information

Methyltransferase-like 10 (METTL10) is a lysine trimethyltransferase targeting eukaryotic translation elongation factor 1A1 (eEF1A1), which is well preserved from simple eukaryotes such as *Saccharomyces cerevisiae* to mammals such as humans and mice. Recently, METTL10 was identified as an estimated glomerular filtration rate (eGFR)-associated gene through a transethnic genome-wide association study of eGFR. (PMID: 39774961)

Storage

Storage:
Store at -20°C. Stable for one year after shipment.

Storage Buffer:
PBS with 0.02% sodium azide and 50% glycerol, pH7.3

Aliquoting is unnecessary for -20°C storage

For technical support and original validation data for this product please contact:

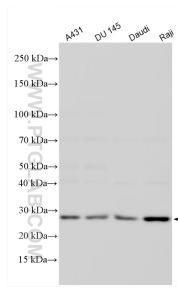
T: 4006900926

E: Proteintech-CN@ptglab.com

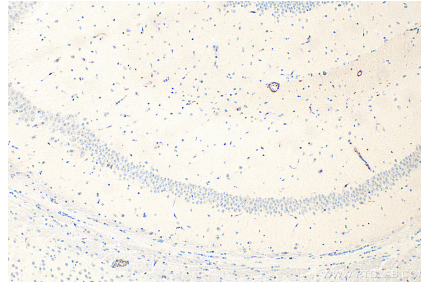
W: ptgcn.com

This product is exclusively available under Proteintech Group brand and is not available to purchase from any other manufacturer.

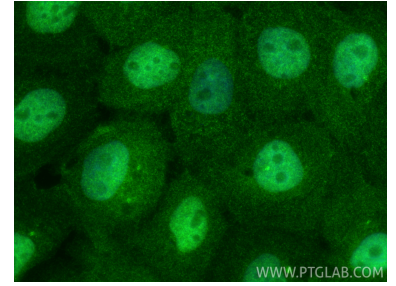
Selected Validation Data



Various lysates were subjected to SDS PAGE followed by western blot with 33763-1-AP (METTL10 antibody) at dilution of 1:1500 incubated at room temperature for 1.5 hours.



Immunohistochemical analysis of paraffin-embedded mouse brain tissue slide using 33763-1-AP (METTL10 antibody) at dilution of 1:500 (under 10x lens). Heat mediated antigen retrieval with Tris-EDTA buffer (pH 9.0).



Immunofluorescent analysis of (4% PFA) fixed A431 cells using METTL10 antibody (33763-1-AP) at dilution of 1:400 and CoraLite®488-Conjugated Goat Anti-Rabbit IgG(H+L) (SA00013-2).