

For Research Use Only

# PLCB4 Polyclonal antibody, PBS Only

Catalog Number: 33683-1-PBS



## Basic Information

Catalog Number:

33683-1-PBS

Source:

Rabbit

Isotype:

IgG

Immunogen Catalog Number:

AG38268

GenBank Accession Number:

NM\_182797.2

GeneID (NCBI):

5332

UNIPROT ID:

Q15147

Full Name:

phospholipase C, beta 4

Calculated MW:

134 kDa, 1175aa

Observed MW:

134 kDa

Purification Method:

Antigen affinity Purification

## Applications

Tested Applications:

WB, Indirect ELISA

Species Specificity:

human

## Background Information

Phospholipase C beta 4 (PLCB4) is a direct effector of the endothelin receptor signaling pathway that plays an essential role in lower jaw and middle ear structures development (PMID: 35284927). Additionally, PLCB4 has a critical role in osteosarcoma progression and may serve as a novel diagnostic or therapeutic target in pediatric patients with acute myeloid leukemia (PMID: 39987366; 31788080).

## Storage

Storage:

Store at -80°C.

**The product is shipped with ice packs. Upon receipt, store it immediately at -80°C**

Storage Buffer:

PBS only, pH7.3

For technical support and original validation data for this product please contact:

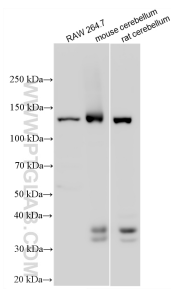
T: 4006900926

E: [Proteintech-CN@ptglab.com](mailto:Proteintech-CN@ptglab.com)

W: [ptgcn.com](http://ptgcn.com)

**This product is exclusively available under Proteintech Group brand and is not available to purchase from any other manufacturer.**

## Selected Validation Data



Various lysates were subjected to SDS PAGE followed by western blot with 33683-1-AP (PLCB4 antibody) at dilution of 1:3000 incubated at room temperature for 1.5 hours. This data was developed using the same antibody clone with 33683-1-PBS in a different storage buffer formulation.