

For Research Use Only

PLCB4 Polyclonal antibody

Catalog Number: 33683-1-AP



Basic Information

Catalog Number:

33683-1-AP

Source:

Rabbit

Isotype:

IgG

Immunogen Catalog Number:

AG38268

GenBank Accession Number:

NM_182797.2

GeneID (NCBI):

5332

UNIPROT ID:

Q15147

Full Name:

phospholipase C, beta 4

Calculated MW:

134 kDa, 1175aa

Observed MW:

134 kDa

Purification Method:

Antigen affinity Purification

Recommended Dilutions:

WB: 1:1000-1:6000

Applications

Tested Applications:

WB, ELISA

Species Specificity:

human

Positive Controls:

WB : RAW 264.7 cells, mouse cerebellum tissue, rat cerebellum tissue

Background Information

Phospholipase C beta 4 (PLCB4) is a direct effector of the endothelin receptor signaling pathway that plays an essential role in lower jaw and middle ear structures development (PMID: 35284927). Additionally, PLCB4 has a critical role in osteosarcoma progression and may serve as a novel diagnostic or therapeutic target in pediatric patients with acute myeloid leukemia (PMID: 39987366; 31788080).

Storage

Storage:

Store at -20°C. Stable for one year after shipment.

Storage Buffer:

PBS with 0.02% sodium azide and 50% glycerol, pH7.3

Aliquoting is unnecessary for -20°C storage

For technical support and original validation data for this product please contact:

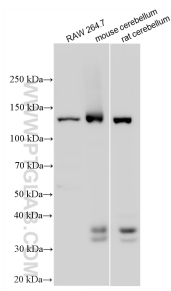
T: 4006900926

E: Proteintech-CN@ptglab.com

W: ptgcn.com

This product is exclusively available under Proteintech Group brand and is not available to purchase from any other manufacturer.

Selected Validation Data



Various lysates were subjected to SDS PAGE followed by western blot with 33683-1-AP (PLCB4 antibody) at dilution of 1:3000 incubated at room temperature for 1.5 hours.