

For Research Use Only

# CRYL1 Polyclonal antibody, PBS Only

Catalog Number: 33679-1-PBS



## Basic Information

Catalog Number:

33679-1-PBS

Source:

Rabbit

Isotype:

IgG

Immunogen Catalog Number:

AG38269

GenBank Accession Number:

NM\_015974.2

GeneID (NCBI):

51084

UNIPROT ID:

Q9Y2S2

Full Name:

crystallin, lambda 1

Calculated MW:

35kDa, 319aa

Observed MW:

35 kDa

Purification Method:

Antigen affinity Purification

## Applications

Tested Applications:

WB, Indirect ELISA

Species Specificity:

human, mouse, rat

## Background Information

CRYL1 (Crystallin Lambda 1) is a ubiquitously-expressed, dual-function protein that was first isolated from rabbit lens tissue. Human CRYL1 is encoded at chromosomal locus 13q12.11, contains two HCDH (3-hydroxyacyl-CoA dehydrogenase) domains, and is most abundant in liver and kidney, with only trace expression in peripheral-blood leukocytes and thymus. Further research showed that CRYL1 was expressed at lower levels in HCC tumors than in adjacent tissues, and this reduced expression was associated with advanced tumor staging, larger tumors, and decreased patient disease-free survival.

## Storage

Storage:

Store at -80°C.

**The product is shipped with ice packs. Upon receipt, store it immediately at -80°C**

Storage Buffer:

PBS only, pH7.3

For technical support and original validation data for this product please contact:

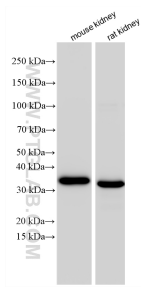
T: 4006900926

E: [Proteintech-CN@ptglab.com](mailto:Proteintech-CN@ptglab.com)

W: [ptgcn.com](http://ptgcn.com)

**This product is exclusively available under Proteintech Group brand and is not available to purchase from any other manufacturer.**

## Selected Validation Data



Various lysates were subjected to SDS PAGE followed by western blot with 33679-1-AP (CRYL1 antibody) at dilution of 1:6000 incubated at room temperature for 1.5 hours. This data was developed using the same antibody clone with 33679-1-PBS in a different storage buffer formulation.