

For Research Use Only

# CRYL1 Polyclonal antibody

Catalog Number:33679-1-AP



## Basic Information

<b>Catalog Number:</b> 33679-1-AP	<b>GenBank Accession Number:</b> NM_015974.2	<b>Purification Method:</b> Antigen affinity Purification
<b>Source:</b> Rabbit	<b>GeneID (NCBI):</b> 51084	<b>Recommended Dilutions:</b> WB: 1:2000-1:12000
<b>Isotype:</b> IgG	<b>UNIPROT ID:</b> Q9Y2S2	
<b>Immunogen Catalog Number:</b> AG38269	<b>Full Name:</b> crystallin, lambda 1	
	<b>Calculated MW:</b> 35kDa, 319aa	
	<b>Observed MW:</b> 35 kDa	

## Applications

<b>Tested Applications:</b> WB, ELISA	<b>Positive Controls:</b> WB : mouse kidney tissue, rat kidney tissue
<b>Species Specificity:</b> human, mouse, rat	

## Background Information

CRYL1 (Crystallin Lambda 1) is a ubiquitously-expressed, dual-function protein that was first isolated from rabbit lens tissue. Human CRYL1 is encoded at chromosomal locus 13q12.11, contains two HCDH (3-hydroxyacyl-CoA dehydrogenase) domains, and is most abundant in liver and kidney, with only trace expression in peripheral-blood leukocytes and thymus. Further research showed that CRYL1 was expressed at lower levels in HCC tumors than in adjacent tissues, and this reduced expression was associated with advanced tumor staging, larger tumors, and decreased patient disease-free survival.

## Storage

**Storage:**  
Store at -20°C. Stable for one year after shipment.  
**Storage Buffer:**  
PBS with 0.02% sodium azide and 50% glycerol, pH7.3  
Aliquoting is unnecessary for -20°C storage

For technical support and original validation data for this product please contact:

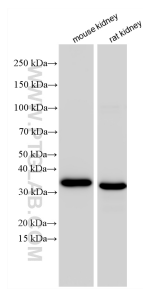
T: 4006900926

E: [Proteintech-CN@ptglab.com](mailto:Proteintech-CN@ptglab.com)

W: [ptgcn.com](http://ptgcn.com)

**This product is exclusively available under Proteintech Group brand and is not available to purchase from any other manufacturer.**

## Selected Validation Data



Various lysates were subjected to SDS PAGE followed by western blot with 33679-1-AP (CRYL1 antibody) at dilution of 1:6000 incubated at room temperature for 1.5 hours.