

For Research Use Only

# LTBR Polyclonal antibody

Catalog Number: 33655-1-AP



## Basic Information

Catalog Number:

33655-1-AP

Source:

Rabbit

Isotype:

IgG

Immunogen Catalog Number:

EG6278

GenBank Accession Number:

NM\_010736

GeneID (NCBI):

17000

UNIPROT ID:

P50284

Full Name:

Lymphotoxin B receptor

Calculated MW:

45 kDa

Observed MW:

60 kDa

Purification Method:

Antigen affinity Purification

Recommended Dilutions:

WB: 1:500-1:1000

## Applications

Tested Applications:

WB, ELISA

Species Specificity:

mouse

Positive Controls:

WB : Recombinant protein,

## Background Information

Lymphotoxin-beta receptor (LTBR) is a receptor for the heterotrimeric lymphotoxin containing LTA and LTB, and for TNFS14/LIGHT. It can activate the NF-kappa-B signaling pathway upon stimulation with lymphotoxin (LTA1-LTB2) (PMID: 24248355). LTBR is constitutively expressed on stromal cells and myeloid lineage cells but not on T or B lymphocytes, which may be a novel immune checkpoint of tumor-associated macrophages (PMID: 20603617; 39429877).

## Storage

Storage:

Store at -20°C. Stable for one year after shipment.

Storage Buffer:

PBS with 0.02% sodium azide and 50% glycerol, pH7.3

Aliquoting is unnecessary for -20°C storage

For technical support and original validation data for this product please contact:

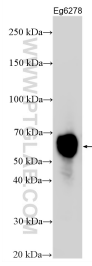
T: 4006900926

E: Proteintech-CN@ptglab.com

W: ptgcn.com

This product is exclusively available under Proteintech Group brand and is not available to purchase from any other manufacturer.

## Selected Validation Data



Mouse LTBR Recombinant protein (Cat No.Eg6278) were subjected to SDS PAGE followed by western blot with 33655-1-AP (LTBR antibody) at dilution of 1:500 incubated at room temperature for 1.5 hours.