

For Research Use Only

CRYBA4 Polyclonal antibody, PBS Only

Catalog Number: 33621-1-PBS



Basic Information

Catalog Number:

33621-1-PBS

Source:

Rabbit

Isotype:

IgG

Immunogen Catalog Number:

AG39089

GenBank Accession Number:

BC069404

GeneID (NCBI):

1413

UNIPROT ID:

P53673

Full Name:

crystallin, beta A4

Calculated MW:

196 aa, 22 kDa

Observed MW:

22 kDa

Purification Method:

Antigen affinity Purification

Applications

Tested Applications:

WB, Indirect ELISA

Species Specificity:

human, mouse, rat

Background Information

CRYBA4, also called β A4-crystallin, is the dominant structural components of the vertebrate eye lens (PMID: 16960806). Missense mutations of CRYBA4 (e.g., p.R95W, p.V150D) predicted to be highly pathogenic are linked with autosomal-dominant congenital cataract, indicating that both crystallin aggregation and non-lens signaling functions merit therapeutic targeting (PMID: 31935276).

Storage

Storage:

Store at -80°C.

The product is shipped with ice packs. Upon receipt, store it immediately at -80°C

Storage Buffer:

PBS only, pH7.3

For technical support and original validation data for this product please contact:

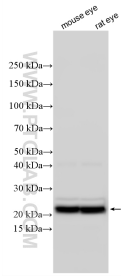
T: 4006900926

E: Proteintech-CN@ptglab.com

W: ptgcn.com

This product is exclusively available under Proteintech Group brand and is not available to purchase from any other manufacturer.

Selected Validation Data



Various lysates were subjected to SDS PAGE followed by western blot with 33621-1-AP (CRYBA4 antibody) at dilution of 1:80000 incubated at room temperature for 1.5 hours. This data was developed using the same antibody clone with 33621-1-PBS in a different storage buffer formulation.