

For Research Use Only

# CRYBA4 Polyclonal antibody

Catalog Number:33621-1-AP



## Basic Information

Catalog Number:

33621-1-AP

Source:

Rabbit

Isotype:

IgG

Immunogen Catalog Number:

AG39089

GenBank Accession Number:

BC069404

GeneID (NCBI):

1413

UNIPROT ID:

P53673

Full Name:

crystallin, beta A4

Calculated MW:

196 aa, 22 kDa

Observed MW:

22 kDa

Purification Method:

Antigen affinity Purification

Recommended Dilutions:

WB: 1:20000-1:100000

## Applications

Tested Applications:

WB, ELISA

Species Specificity:

human, mouse, rat

Positive Controls:

WB : mouse eye tissue, rat eye tissue

## Background Information

CRYBA4, also called  $\beta$  A4-crystallin, is the dominant structural components of the vertebrate eye lens (PMID: 16960806). Missense mutations of CRYBA4 (e.g., p.R95W, p.V150D) predicted to be highly pathogenic are linked with autosomal-dominant congenital cataract, indicating that both crystallin aggregation and non-lens signaling functions merit therapeutic targeting (PMID: 31935276).

## Storage

Storage:

Store at -20°C. Stable for one year after shipment.

Storage Buffer:

PBS with 0.02% sodium azide and 50% glycerol, pH7.3

Aliquoting is unnecessary for -20°C storage

For technical support and original validation data for this product please contact:

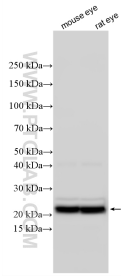
T: 4006900926

E: Proteintech-CN@ptglab.com

W: ptgcn.com

This product is exclusively available under Proteintech Group brand and is not available to purchase from any other manufacturer.

## Selected Validation Data



Various lysates were subjected to SDS PAGE followed by western blot with 33621-1-AP (CRYBA4 antibody) at dilution of 1:80000 incubated at room temperature for 1.5 hours.