

For Research Use Only

# ZZEF1 Polyclonal antibody, PBS Only

Catalog Number: 33605-1-PBS



## Basic Information

Catalog Number:

33605-1-PBS

Source:

Rabbit

Isotype:

IgG

Immunogen Catalog Number:

AG35406

GenBank Accession Number:

BC151836

GeneID (NCBI):

23140

UNIPROT ID:

O43149

Full Name:

zinc finger, ZZ-type with EF-hand domain 1

Observed MW:

300-330 kDa

Purification Method:

Antigen affinity Purification

## Applications

Tested Applications:

WB, Indirect ELISA

Species Specificity:

human, mouse

## Background Information

ZZEF1 is a large cytoplasmic protein distinguished by a ZZ-type zinc finger and an EF-hand calcium-binding domain, hinting at a role in linking protein-protein interactions with calcium-mediated signaling. Its functions are not fully elucidated, but growing evidence suggests involvement in cilia formation, cytoskeletal organization, and cell signaling regulation. Mutations or dysregulation of ZZEF1 have been linked to ciliopathies, tumor biology, and possible neurodevelopmental conditions, making it a gene of emerging biomedical interest. (PMID: 33227311)

## Storage

Storage:

Store at -80°C.

**The product is shipped with ice packs. Upon receipt, store it immediately at -80°C**

Storage Buffer:

PBS only, pH7.3

For technical support and original validation data for this product please contact:

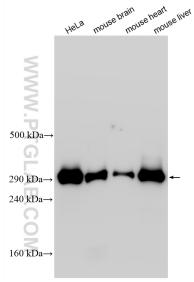
T: 4006900926

E: [Proteintech-CN@ptglab.com](mailto:Proteintech-CN@ptglab.com)

W: [ptgcn.com](http://ptgcn.com)

**This product is exclusively available under Proteintech Group brand and is not available to purchase from any other manufacturer.**

## Selected Validation Data



Various lysates were subjected to Tris-Acetate gel system followed by western blot with 33605-1-AP (ZEF1 antibody) at dilution of 1:300 incubated at room temperature for 1.5 hours. This data was developed using the same antibody clone with 33605-1-PBS in a different storage buffer formulation.