

For Research Use Only

# ESS2/DGCR14 Polyclonal antibody, PBS Only

Catalog Number: 33574-1-PBS



## Basic Information

Catalog Number:

33574-1-PBS

Source:

Rabbit

Isotype:

IgG

Immunogen Catalog Number:

AG37915

GenBank Accession Number:

NM\_022719

GeneID (NCBI):

8220

UNIPROT ID:

Q96DF8

Full Name:

DiGeorge syndrome critical region gene 14

Calculated MW:

476aa, 53 kDa

Observed MW:

50-60 kDa

Purification Method:

Antigen affinity Purification

## Applications

Tested Applications:

WB, Indirect ELISA

Species Specificity:

human

## Background Information

ESS2 splicing factor homolog (ESS2), also named DiGeorge-syndrome critical region 14 (DGCR14), acts as a transcriptional co-activator for retinoic acid receptor-related orphan nuclear receptor gamma/gamma-t (Ror  $\gamma$  /  $\gamma$  t). Ess2 is a nuclear protein with a coiled-coil domain [6] that is conserved from yeasts to humans. ESS2 is a member of the deletion gene cluster in the 22q11.2 deletion syndrome (22q11.2DS, also known as DiGeorge syndrome or CATCH 22 syndrome). The syndrome is characterized by varying defects of the heart, thymus and parathyroid glands.

## Storage

Storage:

Store at -80°C.

**The product is shipped with ice packs. Upon receipt, store it immediately at -80°C**

Storage Buffer:

PBS only, pH7.3

For technical support and original validation data for this product please contact:

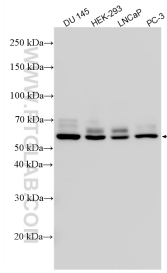
T: 4006900926

E: [Proteintech-CN@ptglab.com](mailto:Proteintech-CN@ptglab.com)

W: [ptgcn.com](http://ptgcn.com)

**This product is exclusively available under Proteintech Group brand and is not available to purchase from any other manufacturer.**

## Selected Validation Data



Various lysates were subjected to SDS PAGE followed by western blot with 33574-1-AP (DGCR14 antibody) at dilution of 1:6000 incubated at room temperature for 1.5 hours. This data was developed using the same antibody clone with 33574-1-PBS in a different storage buffer formulation.