

For Research Use Only

# SLC9A3/NHE3 Polyclonal antibody

Catalog Number: 33559-1-AP



## Basic Information

<b>Catalog Number:</b> 33559-1-AP	<b>GenBank Accession Number:</b> BC101669	<b>Purification Method:</b> Antigen affinity Purification
<b>Source:</b> Rabbit	<b>GeneID (NCBI):</b> 6550	<b>Recommended Dilutions:</b> WB: 1:500-1:3000 IHC: 1:1000-1:4000 IF-P: 1:50-1:500
<b>Isotype:</b> IgG	<b>UNIPROT ID:</b> P48764	
<b>Immunogen Catalog Number:</b> AG38302	<b>Full Name:</b> solute carrier family 9 (sodium/hydrogen exchanger), member 3	
	<b>Calculated MW:</b> 834 aa, 93 kDa	
	<b>Observed MW:</b> 80-100 kDa	

## Applications

### Tested Applications:

WB, IHC, IF-P, ELISA

### Species Specificity:

human, mouse

**Note-IHC: suggested antigen retrieval with TE buffer pH 9.0; (\*) Alternatively, antigen retrieval may be performed with citrate buffer pH 6.0**

### Positive Controls:

WB: 37°C incubated mouse kidney tissue,

IHC: mouse kidney tissue,

IF-P: mouse small intestine tissue, mouse kidney tissue

## Background Information

SLC9A3, also known as NHE3, belongs to the sodium hydrogen exchange protein family (NHE) and is mainly responsible for regulating the concentration of sodium and hydrogen ions inside and outside the cell. SLC9A3 is a Major apical Na<sup>+</sup>/H<sup>+</sup> exchanger in kidney and intestine, playing an important role in renal and intestine Na<sup>+</sup> absorption and blood pressure regulation (PMID:24622516, 2635877). Mutations in SLC9A3 cause Congenital Sodium Diarrhea (PMID: 26358773, 31276831).

## Storage

### Storage:

Store at -20°C. Stable for one year after shipment.

### Storage Buffer:

PBS with 0.02% sodium azide and 50% glycerol, pH7.3

Aliquoting is unnecessary for -20°C storage

For technical support and original validation data for this product please contact:

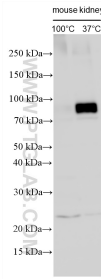
T: 4006900926

E: Proteintech-CN@ptglab.com

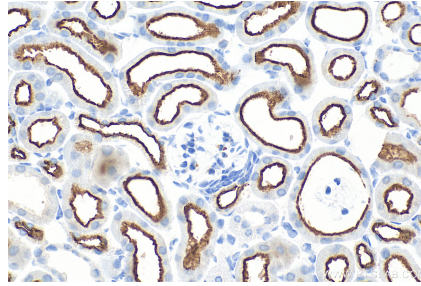
W: ptgcn.com

**This product is exclusively available under Proteintech Group brand and is not available to purchase from any other manufacturer.**

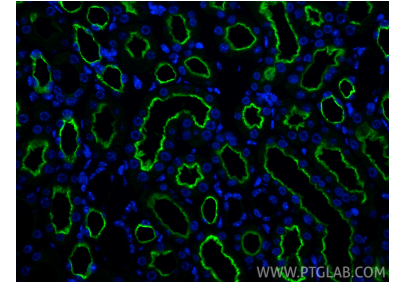
## Selected Validation Data



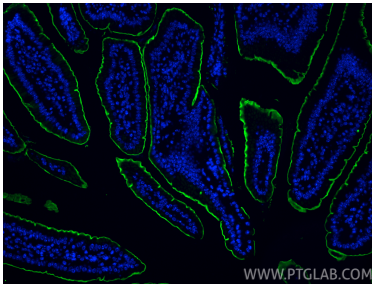
Various lysates were subjected to SDS PAGE followed by western blot with 33559-1-AP (SLC9A3/NHE3 antibody) at dilution of 1:1500 incubated at room temperature for 1.5 hours.



Immunohistochemical analysis of paraffin-embedded mouse kidney tissue slide using 33559-1-AP (SLC9A3/NHE3 antibody) at dilution of 1:2000 (under 40x lens). Heat mediated antigen retrieval with Tris-EDTA buffer (pH 9.0).



Immunofluorescent analysis of (4% PFA) fixed paraffin-embedded mouse kidney tissue using SLC9A3/NHE3 antibody (33559-1-AP) at dilution of 1:200 and CoraLite®488-Conjugated Goat Anti-Rabbit IgG(H+L) (SA00013-2). Heat mediated antigen retrieval with Tris-EDTA buffer (pH 9.0).



Immunofluorescent analysis of (4% PFA) fixed paraffin-embedded mouse small intestine tissue using SLC9A3/NHE3 antibody (33559-1-AP) at dilution of 1:200 and CoraLite®488-Conjugated Goat Anti-Rabbit IgG(H+L) (SA00013-2). Heat mediated antigen retrieval with Tris-EDTA buffer (pH 9.0).