

For Research Use Only

SBF1 Polyclonal antibody, PBS Only

Catalog Number: 33515-1-PBS



Basic Information

Catalog Number:

33515-1-PBS

Concentration:

1 mg/ml

Source:

Rabbit

Isotype:

IgG

Immunogen Catalog Number:

AG38267

GenBank Accession Number:

CCDS93186.1

GeneID (NCBI):

6305

UNIPROT ID:

O95248

Full Name:

SET binding factor 1

Calculated MW:

208kDa, 1868aa

Observed MW:

210 kDa, 140 kDa

Purification Method:

Antigen affinity Purification

Applications

Tested Applications:

WB, Indirect ELISA

Species Specificity:

human, mouse, rat

Background Information

Sbf1, a pseudophosphatase of the myotubularin family, is expressed at high levels in seminiferous tubules of the testis, specifically in Sertoli's cells, spermatogonia, and pachytene spermatocytes, but not in postmeiotic round spermatids. Mice that are nullizygous for Sbf1 exhibit male infertility characterized by azoospermia. Faint bands in some lanes around 150 kDa represent apparent Sbf1 degradation products (PMID: 11994405).

Storage

Storage:

Store at -80°C.

The product is shipped with ice packs. Upon receipt, store it immediately at -80°C

Storage Buffer:

PBS only, pH7.3

For technical support and original validation data for this product please contact:

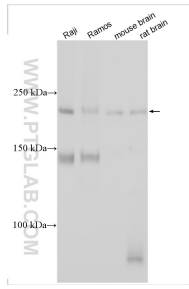
T: 4006900926

E: Proteintech-CN@ptglab.com

W: ptgcn.com

This product is exclusively available under Proteintech Group brand and is not available to purchase from any other manufacturer.

Selected Validation Data



Various lysates were subjected to SDS PAGE followed by western blot with 33515-1-AP (SBF1 antibody) at dilution of 1:2500 incubated at room temperature for 1.5 hours. This data was developed using the same antibody clone with 33515-1-PBS in a different storage buffer formulation.