

For Research Use Only

SBF1 Polyclonal antibody

Catalog Number: 33515-1-AP



Basic Information

Catalog Number: 33515-1-AP	GenBank Accession Number: CCDS93186.1	Purification Method: Antigen affinity Purification
Concentration: 350 ug/ml	GeneID (NCBI): 6305	Recommended Dilutions: WB: 1:1000-1:5000
Source: Rabbit	UNIPROT ID: O95248	
Isotype: IgG	Full Name: SET binding factor 1	
Immunogen Catalog Number: AG38267	Calculated MW: 208kDa, 1868aa	
	Observed MW: 210 kDa, 140 kDa	

Applications

Tested Applications: WB, ELISA	Positive Controls: WB : Raji cells, Ramos cells, mouse brain tissue, rat brain tissue
Species Specificity: human, mouse, rat	

Background Information

Sbf1, a pseudophosphatase of the myotubularin family, is expressed at high levels in seminiferous tubules of the testis, specifically in Sertoli's cells, spermatogonia, and pachytene spermatocytes, but not in postmeiotic round spermatids. Mice that are nullizygous for Sbf1 exhibit male infertility characterized by azoospermia. Faint bands in some lanes around 150 kDa represent apparent Sbf1 degradation products (PMID: 11994405).

Storage

Storage:
Store at -20°C. Stable for one year after shipment.
Storage Buffer:
PBS with 0.02% sodium azide and 50% glycerol, pH7.3
Aliquoting is unnecessary for -20°C storage

For technical support and original validation data for this product please contact:

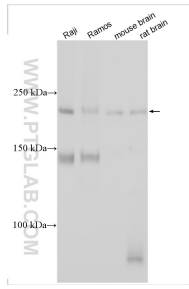
T: 4006900926

E: Proteintech-CN@ptglab.com

W: ptgcn.com

This product is exclusively available under Proteintech Group brand and is not available to purchase from any other manufacturer.

Selected Validation Data



Various lysates were subjected to SDS PAGE followed by western blot with 33515-1-AP (SBF1 antibody) at dilution of 1:2500 incubated at room temperature for 1.5 hours.