

For Research Use Only

# TMEM256 Polyclonal antibody

Catalog Number: 33511-1-AP



## Basic Information

Catalog Number:

33511-1-AP

Source:

Rabbit

Isotype:

IgG

Immunogen Catalog Number:

AG36789

GenBank Accession Number:

BC030270

GeneID (NCBI):

254863

UNIPROT ID:

Q8N2U0

Full Name:

chromosome 17 open reading frame  
61

Observed MW:

12 kDa

Purification Method:

Antigen affinity Purification

Recommended Dilutions:

WB: 1:500-1:2000

## Applications

Tested Applications:

WB, ELISA

Species Specificity:

human

Positive Controls:

WB: A549 cells, Calu-1 cells, LNCaP cells, U-251 cells,  
Y79 cells

## Background Information

TMEM256, also known as C17orf61, is a member of TMEM families, encodes a protein of ~11.7 kDa, TMEM256 is expressed in proximal renal tubular cells, and its subcellular localization is in exosomes (PMID: 39991002).

## Storage

Storage:

Store at -20°C. Stable for one year after shipment.

Storage Buffer:

PBS with 0.02% sodium azide and 50% glycerol, pH7.3

Aliquoting is unnecessary for -20°C storage

For technical support and original validation data for this product please contact:

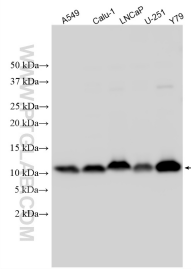
T: 4006900926

E: [Proteintech-CN@ptglab.com](mailto:Proteintech-CN@ptglab.com)

W: [ptgcn.com](http://ptgcn.com)

This product is exclusively available under Proteintech Group brand and is not available to purchase from any other manufacturer.

## Selected Validation Data



Various lysates were subjected to SDS PAGE followed by western blot with 33511-1-AP (TMEM256 antibody) at dilution of 1:1000 incubated at room temperature for 1.5 hours.