

For Research Use Only

ALPI Polyclonal antibody, PBS Only

Catalog Number: 33485-1-PBS



Basic Information

Catalog Number: 33485-1-PBS	GenBank Accession Number: BC132678	Purification Method: Antigen affinity Purification
Source: Rabbit	GeneID (NCBI): 248	
Isotype: IgG	UNIPROT ID: P09923	
Immunogen Catalog Number: AG36025	Full Name: alkaline phosphatase, intestinal	
	Calculated MW: 56 kDa	
	Observed MW: 55 kDa	

Applications

Tested Applications:
WB, Indirect ELISA

Species Specificity:
human, mouse, rat

Background Information

ALPI (intestinal alkaline phosphatase) is a brush-border enzyme expressed in the gut that plays a critical role in maintaining intestinal homeostasis. By dephosphorylating pro-inflammatory microbial products, it helps prevent bacterial translocation and systemic inflammation. Dysfunction or deficiency of ALPI is linked to conditions such as increased intestinal permeability, metabolic disorders, and inflammatory diseases, making it a promising therapeutic target for preserving gut health.

Storage

Storage:
Store at -80°C.
The product is shipped with ice packs. Upon receipt, store it immediately at -80°C

Storage Buffer:
PBS only, pH7.3

For technical support and original validation data for this product please contact:

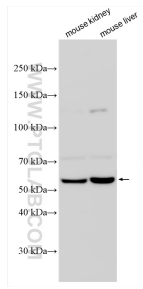
T: 4006900926

E: Proteintech-CN@ptglab.com

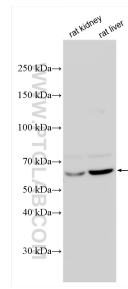
W: ptgcn.com

This product is exclusively available under Proteintech Group brand and is not available to purchase from any other manufacturer.

Selected Validation Data



Various lysates were subjected to SDS PAGE followed by western blot with 33485-1-AP (ALPI antibody) at dilution of 1:4000 incubated at room temperature for 1.5 hours. This data was developed using the same antibody clone with 33485-1-PBS in a different storage buffer formulation.



Various lysates were subjected to SDS PAGE followed by western blot with 33485-1-AP (ALPI antibody) at dilution of 1:4000 incubated at room temperature for 1.5 hours. This data was developed using the same antibody clone with 33485-1-PBS in a different storage buffer formulation.