

For Research Use Only

# ALPI Polyclonal antibody

Catalog Number: 33485-1-AP



## Basic Information

Catalog Number:

33485-1-AP

Source:

Rabbit

Isotype:

IgG

Immunogen Catalog Number:

AG36025

GenBank Accession Number:

BC132678

GeneID (NCBI):

248

UNIPROT ID:

P09923

Full Name:

alkaline phosphatase, intestinal

Calculated MW:

56 kDa

Observed MW:

55 kDa

Purification Method:

Antigen affinity Purification

Recommended Dilutions:

WB: 1:1000-1:8000

## Applications

Tested Applications:

WB, ELISA

Species Specificity:

human, mouse, rat

Positive Controls:

WB : rat kidney tissue, mouse kidney tissue, mouse liver tissue, rat liver tissue

## Background Information

ALPI (intestinal alkaline phosphatase) is a brush-border enzyme expressed in the gut that plays a critical role in maintaining intestinal homeostasis. By dephosphorylating pro-inflammatory microbial products, it helps prevent bacterial translocation and systemic inflammation. Dysfunction or deficiency of ALPI is linked to conditions such as increased intestinal permeability, metabolic disorders, and inflammatory diseases, making it a promising therapeutic target for preserving gut health.

## Storage

Storage:

Store at -20°C. Stable for one year after shipment.

Storage Buffer:

PBS with 0.02% sodium azide and 50% glycerol, pH7.3

Aliquoting is unnecessary for -20°C storage

For technical support and original validation data for this product please contact:

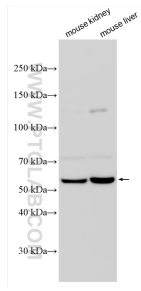
T: 4006900926

E: [Proteintech-CN@ptglab.com](mailto:Proteintech-CN@ptglab.com)

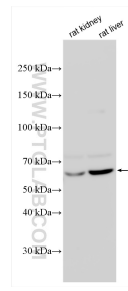
W: [ptgcn.com](http://ptgcn.com)

**This product is exclusively available under Proteintech Group brand and is not available to purchase from any other manufacturer.**

## Selected Validation Data



Various lysates were subjected to SDS PAGE followed by western blot with 33485-1-AP (ALPI antibody) at dilution of 1:4000 incubated at room temperature for 1.5 hours.



Various lysates were subjected to SDS PAGE followed by western blot with 33485-1-AP (ALPI antibody) at dilution of 1:4000 incubated at room temperature for 1.5 hours.