

For Research Use Only

# WDSOF1 Polyclonal antibody, PBS Only

Catalog Number: 33483-1-PBS



## Basic Information

Catalog Number:

33483-1-PBS

Source:

Rabbit

Isotype:

IgG

Immunogen Catalog Number:

AG35559

GenBank Accession Number:

BC112042

GeneID (NCBI):

25879

UNIPROT ID:

Q9NV06

Full Name:

WD repeats and SOF1 domain containing

Calculated MW:

597 aa, 67 kDa

Observed MW:

60 kDa

Purification Method:

Antigen affinity Purification

## Applications

Tested Applications:

WB, IHC, IF/ICC, Indirect ELISA

Species Specificity:

human, mouse, rat

## Background Information

WDSOF1 (WD repeat and SOF1 domain-containing 1, also known as DCAF13) functions as a substrate receptor subunit for the CRL4-DDB1 E3 ubiquitin ligase complex. It contains WD40 repeat clusters and is primarily localized in the nucleolus, where it participates in the processing of 40S ribosomal RNA precursors and the regulation of the estrogen receptor. Recent research has revealed its indispensable role in uterine development: its deficiency leads to the downregulation of estrogen target genes, an increase in H3K9me3 levels, failure of embryo implantation, and complete infertility in female mice. Furthermore, WDSOF1 is located at 8q22.3, a genomic region frequently amplified in tumors. It is highly expressed in various cancers, including liver and breast cancer, and is associated with poor prognosis, positioning it as an oncogenic factor and a potential therapeutic target.

## Storage

Storage:

Store at -80°C.

**The product is shipped with ice packs. Upon receipt, store it immediately at -80°C**

Storage Buffer:

PBS only, pH7.3

For technical support and original validation data for this product please contact:

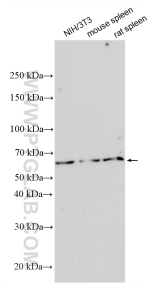
T: 4006900926

E: [Proteintech-CN@ptglab.com](mailto:Proteintech-CN@ptglab.com)

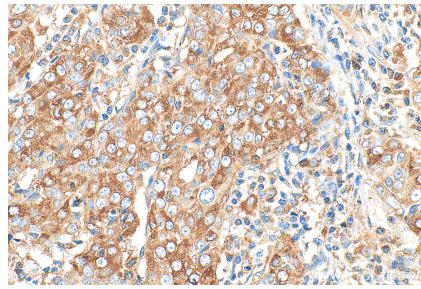
W: [ptgcn.com](http://ptgcn.com)

**This product is exclusively available under Proteintech Group brand and is not available to purchase from any other manufacturer.**

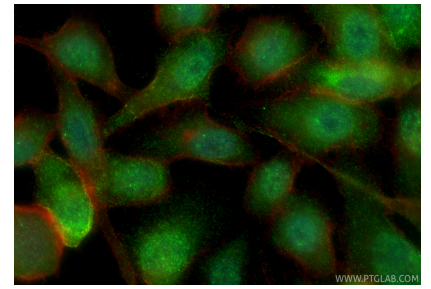
## Selected Validation Data



Various lysates were subjected to SDS PAGE followed by western blot with 33483-1-AP (WDSOF1 antibody) at dilution of 1:2000 incubated at room temperature for 1.5 hours. This data was developed using the same antibody clone with 33483-1-PBS in a different storage buffer formulation.



Immunohistochemical analysis of paraffin-embedded human ovary tumor tissue slide using 33483-1-AP (WDSOF1 antibody) at dilution of 1:200 (under 40x lens). Heat mediated antigen retrieval with Tris-EDTA buffer (pH 9.0). This data was developed using the same antibody clone with 33483-1-PBS in a different storage buffer formulation.



Immunofluorescent analysis of (-20°C Ethanol) fixed PC-3 cells using WDSOF1 antibody (33483-1-AP) at dilution of 1:400 and Coralite@488-Conjugated Goat Anti-Rabbit IgG(H+L) (SA00013-2), CL594-Phalloidin (red). This data was developed using the same antibody clone with 33483-1-PBS in a different storage buffer formulation.