

For Research Use Only

# IQCG Polyclonal antibody, PBS Only

Catalog Number: 33459-1-PBS



## Basic Information

Catalog Number:

33459-1-PBS

Concentration:

1 mg/ml

Source:

Rabbit

Isotype:

IgG

Immunogen Catalog Number:

AG37506

GenBank Accession Number:

BC004816

GeneID (NCBI):

84223

UNIPROT ID:

Q9H095

Full Name:

IQ motif containing G

Calculated MW:

51 kDa

Observed MW:

50 kDa

Purification Method:

Antigen affinity Purification

## Applications

Tested Applications:

WB, Indirect ELISA

Species Specificity:

human, mouse

## Background Information

Human IQ motif containing G (IQCG) gene was first reported to be involved in the chromosome translocation in a case of acute T-lymphoid/myeloid leukemia. The expression of Iqcg is prominently enriched in the testis of mice and reveals an ordered expression pattern during spermatogenesis. Iqcg knockout (KO) mice are sterile, due to the severe malformation and total immobility of their spermatozoa. The axoneme in the KO sperm flagellum is disorganized and hardly any typical normal "9+2" pattern, composed of two central microtubules surrounded by nine microtubular doublets, could be found in the KO spermatids. However, the cilia structures in the trachea and oviduct, as well as histological appearances of other major tissues, remain unaffected in the KO mice, suggesting Iqcg's specific role in spermiogenesis (PMID: 24849454).

## Storage

Storage:

Store at -80°C.

**The product is shipped with ice packs. Upon receipt, store it immediately at -80°C**

Storage Buffer:

PBS only, pH7.3

For technical support and original validation data for this product please contact:

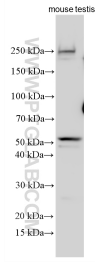
T: 4006900926

E: [Proteintech-CN@ptglab.com](mailto:Proteintech-CN@ptglab.com)

W: [ptgcn.com](http://ptgcn.com)

**This product is exclusively available under Proteintech Group brand and is not available to purchase from any other manufacturer.**

## Selected Validation Data



Various lysates were subjected to SDS PAGE followed by western blot with 33459-1-AP (IQCG antibody) at dilution of 1:2000 incubated at room temperature for 1.5 hours. This data was developed using the same antibody clone with 33459-1-PBS in a different storage buffer formulation.