

For Research Use Only

# NEPRO Polyclonal antibody

Catalog Number:33450-1-AP



## Basic Information

**Catalog Number:**

33450-1-AP

**Source:**

Rabbit

**Isotype:**

IgG

**Immunogen Catalog Number:**

AG38276

**GenBank Accession Number:**

NM\_015412.3

**GeneID (NCBI):**

25871

**UNIPROT ID:**

Q6NW34

**Full Name:**

chromosome 3 open reading frame 17

**Calculated MW:**

65kDa, 567aa

**Observed MW:**

58 kDa

**Purification Method:**

Antigen affinity Purification

**Recommended Dilutions:**

WB: 1:1000-1:4000

## Applications

**Tested Applications:**

WB, ELISA

**Species Specificity:**

human

**Positive Controls:**

WB : Jurkat cells, Raji cells, Ramos cells, SH-SY5Y cells, SK-N-SH cells

## Background Information

The NEPRO protein (full name: Nucleolus and Neural Progenitor Protein) belongs to the NEPRO family and is primarily localized in the nucleolus. Its core function is to serve as a key downstream factor of the Notch signaling pathway during cerebral cortex development, where it maintains the stemness of neural progenitor cells by inhibiting their differentiation into neurons, thereby ensuring normal development of the nervous system. Additionally, this protein also plays an indispensable role during pre-implantation embryonic development in mice (PMID: 26178919).

## Storage

**Storage:**

Store at -20°C. Stable for one year after shipment.

**Storage Buffer:**

PBS with 0.02% sodium azide and 50% glycerol, pH7.3

Aliquoting is unnecessary for -20°C storage

For technical support and original validation data for this product please contact:

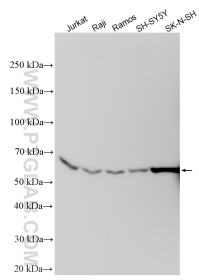
T: 4006900926

E: Proteintech-CN@ptglab.com

W: ptgcn.com

**This product is exclusively available under Proteintech Group brand and is not available to purchase from any other manufacturer.**

## Selected Validation Data



Various lysates were subjected to SDS PAGE followed by western blot with 33450-1-AP (NEPRO antibody) at dilution of 1:2000 incubated at room temperature for 1.5 hours.