

For Research Use Only

RPP25L Polyclonal antibody

Catalog Number:33447-1-AP



Basic Information

Catalog Number: 33447-1-AP	GenBank Accession Number: BC032136	Purification Method: Antigen affinity Purification
Concentration: 400 ug/ml	GeneID (NCBI): 138716	Recommended Dilutions: WB: 1:1000-1:4000
Source: Rabbit	UNIPROT ID: Q8N5L8	
Isotype: IgG	Full Name: chromosome 9 open reading frame 23	
Immunogen Catalog Number: AG37795	Observed MW: 17-19 kDa	

Applications

Tested Applications: WB, ELISA	Positive Controls:
Species Specificity: human	WB : A-204 cells, A431 cells, BxPC-3 cells, DU 145 cells, Raji cells, Ramos cells, THP-1 cells, U2OS cells

Background Information

RPP25L (Ribonuclease P protein subunit p25-like protein), also known as C9orf23. RPP25L is a subunit of RNase P complex, which is mainly involved in the processing of tRNA precursor, and is responsible for cutting off the 5' leading sequence of tRNA precursor to generate mature tRNA. In addition, RPP25L may also participate in other RNA metabolism processes, such as the processing of rRNA.

Storage

Storage:
Store at -20°C. Stable for one year after shipment.
Storage Buffer:
PBS with 0.02% sodium azide and 50% glycerol, pH7.3
Aliquoting is unnecessary for -20°C storage

For technical support and original validation data for this product please contact:

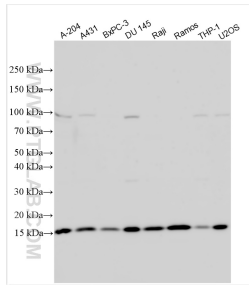
T: 4006900926

E: Proteintech-CN@ptglab.com

W: ptgcn.com

This product is exclusively available under Proteintech Group brand and is not available to purchase from any other manufacturer.

Selected Validation Data



Various lysates were subjected to SDS PAGE followed by western blot with 33447-1-AP (RPP25L antibody) at dilution of 1:2000 incubated at room temperature for 1.5 hours.