

For Research Use Only

# GGT6 Polyclonal antibody, PBS Only

Catalog Number: 33436-1-PBS



## Basic Information

Catalog Number:

33436-1-PBS

Source:

Rabbit

Isotype:

IgG

Immunogen Catalog Number:

AG35941

GenBank Accession Number:

BC063111

GeneID (NCBI):

124975

UNIPROT ID:

Q6P531

Full Name:

gamma-glutamyltransferase 6

Observed MW:

44 kDa, 51 kDa

Purification Method:

Antigen affinity Purification

## Applications

Tested Applications:

WB, IF/ICC, Indirect ELISA

Species Specificity:

human

## Background Information

Gamma-glutamyltransferase 6 (GGT6) is a membrane-bound extracellular enzyme encoded by the GGT6 gene on human chromosome 17p13.2. It belongs to the gamma-glutamyltransferase (GGT; EC 2.3.2.2) family, which catalyzes the cleavage of  $\gamma$ -glutamyl peptide bonds in glutathione and other peptides, transferring the  $\gamma$ -glutamyl moiety to various acceptors such as amino acids or water.

## Storage

Storage:

Store at -80°C.

**The product is shipped with ice packs. Upon receipt, store it immediately at -80°C**

Storage Buffer:

PBS only, pH7.3

For technical support and original validation data for this product please contact:

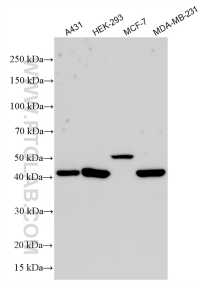
T: 4006900926

E: [Proteintech-CN@ptglab.com](mailto:Proteintech-CN@ptglab.com)

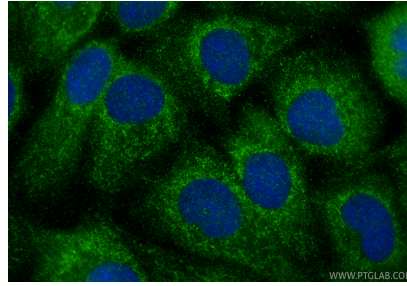
W: [ptgcn.com](http://ptgcn.com)

**This product is exclusively available under Proteintech Group brand and is not available to purchase from any other manufacturer.**

## Selected Validation Data



Various lysates were subjected to SDS PAGE followed by western blot with 33436-1-AP (GGT6 antibody) at dilution of 1:3000 incubated at room temperature for 1.5 hours. This data was developed using the same antibody clone with 33436-1-PBS in a different storage buffer formulation.



Immunofluorescent analysis of (-20°C Methanol) fixed A431 cells using GGT6 antibody (33436-1-AP) at dilution of 1:400 and CoraLite® 488-Conjugated Goat Anti-Rabbit IgG(H+L) (SA00013-2). This data was developed using the same antibody clone with 33436-1-PBS in a different storage buffer formulation.