

For Research Use Only

REG Polyclonal antibody

Catalog Number: 33428-1-AP



Basic Information

Catalog Number:

33428-1-AP

Source:

Rabbit

Isotype:

IgG

Immunogen Catalog Number:

EG6797

GenBank Accession Number:

NM_009042.1

GeneID (NCBI):

19692

UNIPROT ID:

P43137

Full Name:

regenerating islet-derived 1

Calculated MW:

19 kDa

Observed MW:

16 kDa

Purification Method:

Antigen affinity Purification

Recommended Dilutions:

WB: 1:500-1:2000

Applications

Tested Applications:

WB, ELISA

Species Specificity:

mouse, rat

Positive Controls:

WB : mouse pancreas tissue, rat pancreas tissue

Background Information

The Reg gene family is a multigene family grouped into four subclasses, types I, II, III and IV, based on the primary structures of the encoded proteins. This gene encodes a protein that is secreted by the exocrine pancreas. It is associated with islet cell regeneration and diabetogenesis and may be involved in pancreatic lithogenesis. It's reported that REG1A was significantly upregulated in tumor specimens and adenoma as compared to normal colorectal tissue. (PMID: 34698109)

Storage

Storage:

Store at -20°C. Stable for one year after shipment.

Storage Buffer:

PBS with 0.02% sodium azide and 50% glycerol, pH7.3

Aliquoting is unnecessary for -20°C storage

For technical support and original validation data for this product please contact:

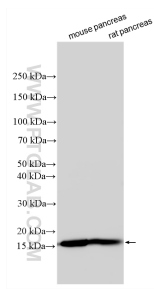
T: 4006900926

E: Proteintech-CN@ptglab.com

W: ptgcn.com

This product is exclusively available under Proteintech Group brand and is not available to purchase from any other manufacturer.

Selected Validation Data



Various lysates were subjected to SDS PAGE followed by western blot with 33428-1-AP (Reg1 antibody) at dilution of 1:1000 incubated at room temperature for 1.5 hours.