

For Research Use Only

CELA2A Polyclonal antibody

Catalog Number: 33375-1-AP



Basic Information

Catalog Number: 33375-1-AP	GenBank Accession Number: NM_007919.3	Purification Method: Antigen affinity Purification
Source: Rabbit	GeneID (NCBI): 13706	Recommended Dilutions: WB: 1:2000-1:16000
Isotype: IgG	UNIPROT ID: P05208	
Immunogen Catalog Number: EG3064	Full Name: elastase 2A	
	Calculated MW: 29 kDa	
	Observed MW: 29 kDa	

Applications

Tested Applications: WB, ELISA	Positive Controls: WB : mouse pancreas tissue, rat pancreas tissue
Species Specificity: mouse, rat	

Background Information

CELA2A (Chymotrypsin-like elastase family member 2A), also known as Elastase-2A, is a circulating enzyme that reduces platelet hyperactivation, triggers both insulin secretion and degradation, and increases insulin sensitivity. ELA-2 is widely found in several organs such as lung, pancreas, liver, blood vessels (mesenteric, and carotid arteries), heart and kidney of rodents (PMID: 31358993, 28386233).

Storage

Storage:
Store at -20°C. Stable for one year after shipment.
Storage Buffer:
PBS with 0.02% sodium azide and 50% glycerol, pH7.3
Aliquoting is unnecessary for -20°C storage

For technical support and original validation data for this product please contact:

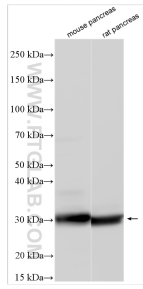
T: 4006900926

E: Proteintech-CN@ptglab.com

W: ptgcn.com

This product is exclusively available under Proteintech Group brand and is not available to purchase from any other manufacturer.

Selected Validation Data



Various lysates were subjected to SDS PAGE followed by western blot with 33375-1-AP (CELA2A antibody) at dilution of 1:8000 incubated at room temperature for 1.5 hours.