

For Research Use Only

# MED29 Polyclonal antibody

Catalog Number: 33366-1-AP



## Basic Information

Catalog Number:

33366-1-AP

Concentration:

400 ug/ml

Source:

Rabbit

Isotype:

IgG

Immunogen Catalog Number:

AG38949

GenBank Accession Number:

NM\_017592.2

GeneID (NCBI):

55588

UNIPROT ID:

Q9NX70

Full Name:

mediator complex subunit 29

Calculated MW:

21kDa, 200aa

Observed MW:

21-25 kDa

Purification Method:

Antigen affinity Purification

Recommended Dilutions:

WB: 1:500-1:2000

IP: 0.5-4.0 ug for 1.0-3.0 mg of total protein lysate

IHC: 1:200-1:800

## Applications

Tested Applications:

WB, IHC, IP, ELISA

Species Specificity:

human

**Note-IHC: suggested antigen retrieval with TE buffer pH 9.0; (\*) Alternatively, antigen retrieval may be performed with citrate buffer pH 6.0**

Positive Controls:

WB : HEK-293T cells, HT-29 cells

IP : HT-29 cells,

IHC : human ovary cancer tissue,

## Background Information

Mediator of RNA polymerase II transcription subunit 29 (MED29) is also named as Mediator complex subunit 29 and Intersex-like protein (IXL). MED29 is one of the most highly conserved proteins across species and is widely expressed in humans both during embryonic development and in adult tissues (PMID: 15555573). MED29 was overexpressed in pancreatic cancer and promoted pancreatic cancer cell viability (PMID: 21225629, PMID: 17332321). MED29 facilitated the epithelial-mesenchymal transition process in OSCC, thereby promoting migration and invasion (PMID: 39462350).

## Storage

Storage:

Store at -20°C. Stable for one year after shipment.

Storage Buffer:

PBS with 0.02% sodium azide and 50% glycerol, pH7.3

Aliquoting is unnecessary for -20°C storage

For technical support and original validation data for this product please contact:

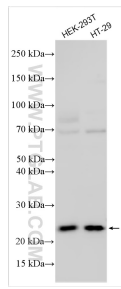
T: 4006900926

E: Proteintech-CN@ptglab.com

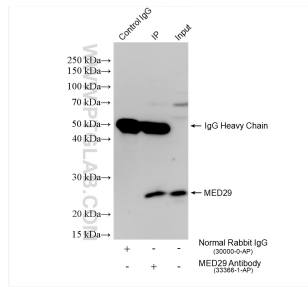
W: ptgcn.com

**This product is exclusively available under Proteintech Group brand and is not available to purchase from any other manufacturer.**

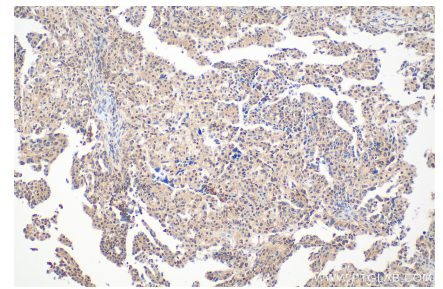
## Selected Validation Data



Various lysates were subjected to SDS PAGE followed by western blot with 33366-1-AP (MED29 antibody) at dilution of 1:1000 incubated at room temperature for 1.5 hours.



IP result of anti-MED29 (IP:33366-1-AP, 4ug; Detection:33366-1-AP 1:800) with HT-29 cells lysate 1760 ug.



Immunohistochemical analysis of paraffin-embedded human ovary cancer tissue slide using 33366-1-AP (MED29 antibody) at dilution of 1:400 (under 20x lens). Heat mediated antigen retrieval with Tris-EDTA buffer (pH 9.0).