

For Research Use Only

# MAST2 Polyclonal antibody, PBS Only

Catalog Number:33335-1-PBS



## Basic Information

Catalog Number:

33335-1-PBS

Source:

Rabbit

Isotype:

IgG

Immunogen Catalog Number:

AG35818

GenBank Accession Number:

NM\_015112.2

GeneID (NCBI):

23139

UNIPROT ID:

Q6P0Q8

Full Name:

microtubule associated  
serine/threonine kinase 2

Calculated MW:

196kDa, 1798aa

Observed MW:

196 kDa

Purification Method:

Antigen affinity Purification

## Applications

Tested Applications:

WB, IF/ICC, Indirect ELISA

Species Specificity:

human

## Background Information

MAST2 is a microtubule-associated serine/threonine kinase, belonging to an evolutionarily conserved branch of AGC protein kinase superfamily. Since its discovery in 1993, it has been widely expressed in many tissues, including brain, heart, lung, liver, intestine and kidney. MAST2 is associated with many diseases, such as breast cancer, liver cancer, myeloma, inflammatory bowel disease, cystic fibrosis and various neurological diseases.

## Storage

Storage:

Store at -80°C.

**The product is shipped with ice packs. Upon receipt, store it immediately at -80°C**

Storage Buffer:

PBS only, pH7.3

For technical support and original validation data for this product please contact:

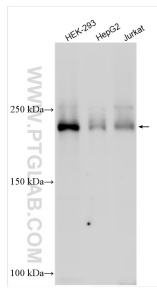
T: 4006900926

E: [Proteintech-CN@ptglab.com](mailto:Proteintech-CN@ptglab.com)

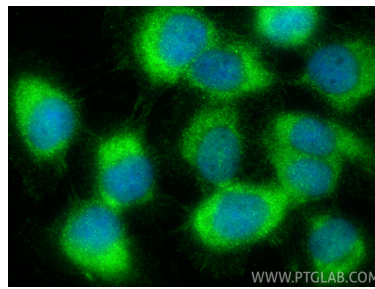
W: [ptgcn.com](http://ptgcn.com)

**This product is exclusively available under Proteintech Group brand and is not available to purchase from any other manufacturer.**

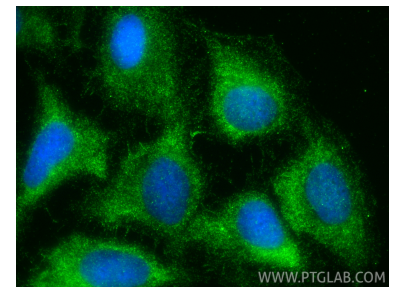
## Selected Validation Data



Various lysates were subjected to SDS PAGE followed by western blot with 33335-1-AP (MAST2 antibody) at dilution of 1:1000 incubated at room temperature for 1.5 hours. This data was developed using the same antibody clone with 33335-1-PBS in a different storage buffer formulation.



Immunofluorescent analysis of (-20°C Methanol) fixed A431 cells using MAST2 antibody (33335-1-AP) at dilution of 1:400 and CoraLite® 488-Conjugated Goat Anti-Rabbit IgG(H+L) (SA00013-2). This data was developed using the same antibody clone with 33335-1-PBS in a different storage buffer formulation.



Immunofluorescent analysis of (-20°C Ethanol) fixed U2OS cells using MAST2 antibody (33335-1-AP) at dilution of 1:400 and CoraLite® 488-Conjugated Goat Anti-Rabbit IgG(H+L) (SA00013-2). This data was developed using the same antibody clone with 33335-1-PBS in a different storage buffer formulation.