

For Research Use Only

# SKA2 Polyclonal antibody, PBS Only

Catalog Number: 33333-1-PBS



## Basic Information

Catalog Number:

33333-1-PBS

Concentration:

1 mg/ml

Source:

Rabbit

Isotype:

IgG

Immunogen Catalog Number:

AG37037

GenBank Accession Number:

BC017873

GeneID (NCBI):

348235

UNIPROT ID:

Q8WVK7

Full Name:

family with sequence similarity 33, member A

Calculated MW:

121 aa, 14 kDa

Observed MW:

15 kDa

Purification Method:

Antigen affinity Purification

## Applications

Tested Applications:

WB, Indirect ELISA

Species Specificity:

human

## Background Information

SKA2 (spindle and KT associated 2), also referred to as FAM33A (family with sequence similarity 33, member A), is a recently identified gene involved in cell cycle regulation, and growing evidence is implicating its roles in tumorigenesis and psychiatric disorders. It has been demonstrated that SKA2, along with its coworkers SKA1 and SKA3, constitutes the SKA complex which plays a critical role in the maintenance of the metaphase plate and/or spindle checkpoint silencing during mitosis. SKA2 is over-expressed both in cancer cell lines and clinical samples including small cell lung cancer and breast cancer, whereas downregulation of SKA2 is associated with depression and suicidal ideation. The expression of SKA2 is regulated by transcription factors including NF- $\kappa$ B and CREB, miRNAs as well as DNA methylation (PMID: 30906829).

## Storage

Storage:

Store at -80°C.

**The product is shipped with ice packs. Upon receipt, store it immediately at -80°C**

Storage Buffer:

PBS only, pH7.3

For technical support and original validation data for this product please contact:

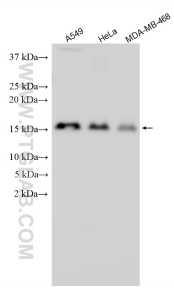
T: 4006900926

E: [Proteintech-CN@ptglab.com](mailto:Proteintech-CN@ptglab.com)

W: [ptgcn.com](http://ptgcn.com)

**This product is exclusively available under Proteintech Group brand and is not available to purchase from any other manufacturer.**

## Selected Validation Data



Various lysates were subjected to SDS PAGE followed by western blot with 33333-1-AP (SKA2 antibody) at dilution of 1:1000 incubated at room temperature for 1.5 hours. This data was developed using the same antibody clone with 33333-1-PBS in a different storage buffer formulation.