

For Research Use Only

# Tesmin Polyclonal antibody

Catalog Number: 33326-1-AP



## Basic Information

Catalog Number:

33326-1-AP

Concentration:

400 µg/ml

Source:

Rabbit

Isotype:

IgG

Immunogen Catalog Number:

AG39255

GenBank Accession Number:

NM\_004923.3

GeneID (NCBI):

9633

UNIPROT ID:

Q9Y4I5

Full Name:

metallothionein-like 5, testis-specific (tesmin)

Calculated MW:

55kDa, 508aa

Observed MW:

60 kDa

Purification Method:

Antigen affinity Purification

Recommended Dilutions:

WB: 1:500-1:2000

## Applications

Tested Applications:

WB, ELISA

Species Specificity:

human

Positive Controls:

WB: human testis tissue,

## Background Information

Testis Expressed Metallothionein Like Protein (Tesmin), also known as Metallothionein-Like 5 (MTL5), encodes the metallothionein-like protein owning some characteristics of metallothionein. Tesmin is a 60 kDa protein which has cysteine-rich motifs (CXC domain), characteristic of metallothioneins (MTs). Tesmin was closely related to meiosis in the reproductive process. As a testis-specific protein, the localization of Tesmin changed dynamically with the progression of meiosis in a mouse experiment, the process of which might be responsive to metal stress like cadmium by oxidative stress (Cd), as well as require the involvement of LIN9. So far, the expression of Tesmin in adult humans has been observed in prostate and gastric cancer (PMID: 39229988, PMID: 33281959, PMID: 31059101).

## Storage

Storage:

Store at -20°C. Stable for one year after shipment.

Storage Buffer:

PBS with 0.02% sodium azide and 50% glycerol, pH7.3

Aliquoting is unnecessary for -20°C storage

For technical support and original validation data for this product please contact:

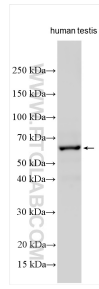
T: 4006900926

E: Proteintech-CN@ptglab.com

W: ptgcn.com

This product is exclusively available under Proteintech Group brand and is not available to purchase from any other manufacturer.

## Selected Validation Data



Human testis tissue were subjected to SDS PAGE followed by western blot with 33326-1-AP (Tesmin antibody) at dilution of 1:1000 incubated at room temperature for 1.5 hours.