

For Research Use Only

# XPC Polyclonal antibody

Catalog Number:33279-1-AP



## Basic Information

<b>Catalog Number:</b> 33279-1-AP	<b>GenBank Accession Number:</b> NM_004628.4	<b>Purification Method:</b> Antigen affinity Purification
<b>Source:</b> Rabbit	<b>GeneID (NCBI):</b> 7508	<b>Recommended Dilutions:</b> WB: 1:1000-1:4000
<b>Isotype:</b> IgG	<b>UNIPROT ID:</b> Q01831	
<b>Immunogen Catalog Number:</b> AG38513	<b>Full Name:</b> xeroderma pigmentosum, complementation group C	
	<b>Calculated MW:</b> 106kDa, 940aa	
	<b>Observed MW:</b> 106-120 kDa	

## Applications

<b>Tested Applications:</b> WB, ELISA	<b>Positive Controls:</b> WB : HEK-293 cells, HeLa cells, K-562 cells
<b>Species Specificity:</b> human	

## Background Information

XPC (DNA repair protein complementing XP-C cells) protein is a pivotal DNA damage recognition factor that plays an indispensable role in the global-genome nucleotide excision repair (GG-NER) pathway. As the primary initiator of GG-NER, it acts as a universal sensor for a wide array of helix-distorting DNA lesions, including those induced by ultraviolet (UV) radiation and chemical carcinogens. Upon binding to damaged DNA, the XPC complex orchestrates the recruitment of the entire repair machinery, serving as a critical guardian of genomic integrity. The calculated molecular weight of XPC is about 106 kDa, but due to post-translational modifications, about 120 kDa will be observed.

## Storage

**Storage:**  
Store at -20°C. Stable for one year after shipment.  
**Storage Buffer:**  
PBS with 0.02% sodium azide and 50% glycerol, pH7.3  
Aliquoting is unnecessary for -20°C storage

For technical support and original validation data for this product please contact:

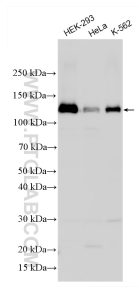
T: 4006900926

E: [Proteintech-CN@ptglab.com](mailto:Proteintech-CN@ptglab.com)

W: [ptgcn.com](http://ptgcn.com)

**This product is exclusively available under Proteintech Group brand and is not available to purchase from any other manufacturer.**

## Selected Validation Data



Various lysates were subjected to SDS PAGE followed by western blot with 33279-1-AP (XPC antibody) at dilution of 1:2000 incubated at room temperature for 1.5 hours.