

For Research Use Only

Enpep Polyclonal antibody

Catalog Number: 33251-1-AP



Basic Information

Catalog Number:

33251-1-AP

Concentration:

450 µg/ml

Source:

Rabbit

Isotype:

IgG

Immunogen Catalog Number:

EG4233

GenBank Accession Number:

NM_007934.3

GeneID (NCBI):

13809

UNIPROT ID:

P16406

Full Name:

glutamyl aminopeptidase

Calculated MW:

108 kDa

Observed MW:

150 kDa

Purification Method:

Antigen affinity Purification

Recommended Dilutions:

WB: 1:500-1:1000

Applications

Tested Applications:

WB, ELISA

Species Specificity:

mouse, rat

Positive Controls:

WB : mouse lung tissue, rat lung tissue

Background Information

The gene ENPEP encodes glutamyl aminopeptidase, which can cut N - terminal aspartic acid from angiotensin II, and is related to tumorigenesis and immune microenvironment. ENPEP is a potential biomarker to classify patients' response to ICIs treatment (PMID: 34862755). This protein has multiple glycosylation sites: 4 N-linked glycans (4 sites), 1 O-linked glycan (1 site).

Storage

Storage:

Store at -20°C. Stable for one year after shipment.

Storage Buffer:

PBS with 0.02% sodium azide and 50% glycerol, pH7.3

Aliquoting is unnecessary for -20°C storage

For technical support and original validation data for this product please contact:

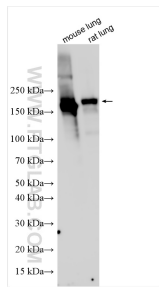
T: 4006900926

E: Proteintech-CN@ptglab.com

W: ptgcn.com

This product is exclusively available under Proteintech Group brand and is not available to purchase from any other manufacturer.

Selected Validation Data



Various lysates were subjected to SDS PAGE followed by western blot with 33251-1-AP (Enpep antibody) at dilution of 1:800 incubated at room temperature for 1.5 hours.