

For Research Use Only

# BORC6 Polyclonal antibody, PBS Only

Catalog Number:33196-1-PBS



## Basic Information

Catalog Number:

33196-1-PBS

Concentration:

1 mg/ml

Source:

Rabbit

Isotype:

IgG

Immunogen Catalog Number:

AG37224

GenBank Accession Number:

BC018880

GeneID (NCBI):

54785

UNIPROT ID:

Q96GS4

Full Name:

chromosome 17 open reading frame

59

Calculated MW:

357 aa, 37 kDa

Observed MW:

40 kDa

Purification Method:

Antigen affinity Purification

## Applications

Tested Applications:

WB, Indirect ELISA

Species Specificity:

human

## Background Information

BORC6 is a part of the BORC complex, which may play a role in lysosomes movement and localization at the cell periphery. Associated with the cytosolic face of lysosomes, the BORC complex may recruit ARL8B and couple lysosomes to microtubule plus-end-directed kinesin motor (PMID: 25898167).

## Storage

Storage:

Store at -80°C.

The product is shipped with ice packs. Upon receipt, store it immediately at -80°C

Storage Buffer:

PBS only, pH7.3

For technical support and original validation data for this product please contact:

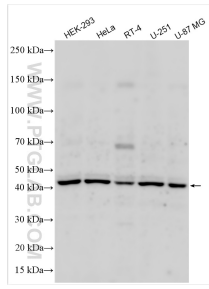
T: 4006900926

E: Proteintech-CN@ptglab.com

W: ptgcn.com

This product is exclusively available under Proteintech Group brand and is not available to purchase from any other manufacturer.

## Selected Validation Data



Various lysates were subjected to SDS PAGE followed by western blot with 33196-1-AP (Lyspersin antibody) at dilution of 1:600 incubated at room temperature for 1.5 hours. This data was developed using the same antibody clone with 33196-1-PBS in a different storage buffer formulation.