

For Research Use Only

BORC6 Polyclonal antibody

Catalog Number:33196-1-AP



Basic Information

Catalog Number:

33196-1-AP

Concentration:

350 ug/ml

Source:

Rabbit

Isotype:

IgG

Immunogen Catalog Number:

AG37224

GenBank Accession Number:

BC018880

GeneID (NCBI):

54785

UNIPROT ID:

Q96GS4

Full Name:

chromosome 17 open reading frame

59

Calculated MW:

357 aa, 37 kDa

Observed MW:

40 kDa

Purification Method:

Antigen affinity Purification

Recommended Dilutions:

WB: 1:500-1:1000

Applications

Tested Applications:

WB, ELISA

Species Specificity:

human

Positive Controls:

WB : HEK-293 cells, HeLa cells, RT-4 cells, U-251 cells, U-87 MG cells

Background Information

BORC6 is a part of the BORC complex, which may play a role in lysosomes movement and localization at the cell periphery. Associated with the cytosolic face of lysosomes, the BORC complex may recruit ARL8B and couple lysosomes to microtubule plus-end-directed kinesin motor (PMID: 25898167).

Storage

Storage:

Store at -20°C. Stable for one year after shipment.

Storage Buffer:

PBS with 0.02% sodium azide and 50% glycerol, pH7.3

Aliquoting is unnecessary for -20°C storage

For technical support and original validation data for this product please contact:

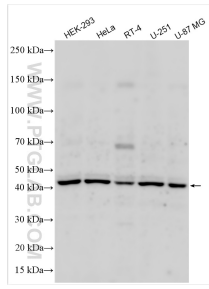
T: 4006900926

E: Proteintech-CN@ptglab.com

W: ptgcn.com

This product is exclusively available under Proteintech Group brand and is not available to purchase from any other manufacturer.

Selected Validation Data



Various lysates were subjected to SDS PAGE followed by western blot with 33196-1-AP (Lyspersin antibody) at dilution of 1:600 incubated at room temperature for 1.5 hours.