

For Research Use Only

MFAP3L Polyclonal antibody

Catalog Number:33188-1-AP



Basic Information

Catalog Number:

33188-1-AP

Concentration:

300 ug/ml

Source:

Rabbit

Isotype:

IgG

Immunogen Catalog Number:

AG37478

GenBank Accession Number:

NM_021647.7

GeneID (NCBI):

9848

UNIPROT ID:

O75121

Full Name:

microfibrillar-associated protein 3-like

Calculated MW:

45 kDa, 409aa

Observed MW:

50 kDa

Purification Method:

Antigen affinity Purification

Recommended Dilutions:

WB: 1:500-1:3000

Applications

Tested Applications:

WB, ELISA

Species Specificity:

human, mouse

Positive Controls:

WB : HeLa cells, mouse testis tissue

Background Information

Microfibrillar-associated protein 3-like (MFAP3L) is a member of the microfibril-associated glycoprotein (MAGP) family. MFAP3L exhibits strong expression in the testis. It functions as a dual-specificity kinase, phosphorylating tyrosine and threonine on target proteins. MFAP3L is involved in the nuclear signaling of EGFR and ERK2, playing a role in cell invasion and metastasis in colorectal cancer (PMID: 24735981). It may also participate in the regulation of tumor microenvironment status and molecular subtypes in bladder cancer (PMID: 39489826).

Storage

Storage:

Store at -20°C. Stable for one year after shipment.

Storage Buffer:

PBS with 0.02% sodium azide and 50% glycerol, pH7.3

Aliquoting is unnecessary for -20°C storage

For technical support and original validation data for this product please contact:

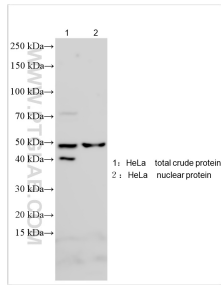
T: 4006900926

E: Proteintech-CN@ptglab.com

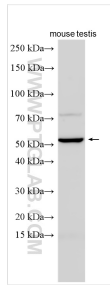
W: ptgcn.com

This product is exclusively available under Proteintech Group brand and is not available to purchase from any other manufacturer.

Selected Validation Data



Various lysates were subjected to SDS PAGE followed by western blot with 33188-1-AP (MFAP3L antibody) at dilution of 1:1500 incubated at room temperature for 1.5 hours.



Various lysates were subjected to SDS PAGE followed by western blot with 33188-1-AP (MFAP3L antibody) at dilution of 1:1500 incubated at room temperature for 1.5 hours.