

For Research Use Only

CD62L Polyclonal antibody

Catalog Number: 33173-1-AP **1 Publications**



Basic Information

Catalog Number: 33173-1-AP	GenBank Accession Number: NM_011346.2	Purification Method: Antigen affinity Purification
Source: Rabbit	GeneID (NCBI): 20343	Recommended Dilutions: WB: 1:500-1:1000
Isotype: IgG	UNIPROT ID: P18337	IHC: 1:50-1:500
Immunogen Catalog Number: EG3845	Full Name: selectin, lymphocyte	IF-P: 1:50-1:500
	Calculated MW: 42 kDa	IF-Fro: 1:50-1:500
	Observed MW: 80-90 kDa	

Applications

Tested Applications: WB, IHC, IF-P, IF-Fro, ELISA	Positive Controls: WB : mouse spleen tissue, IHC : mouse spleen tissue, IF-P : mouse spleen tissue, IF-Fro : mouse spleen tissue,
Cited Applications: WB, IF	
Species Specificity: mouse	
Cited Species: mouse	
Note-IHC: suggested antigen retrieval with TE buffer pH 9.0; (*) Alternatively, antigen retrieval may be performed with citrate buffer pH 6.0	

Background Information

CD62L, also known as L-selectin or SELL, is a member of the selectin family of adhesion molecules that also include CD62E (E-selectin) and CD62P (P-selectin) (PMID: 2663882, 2473156, 1382078). CD62L is a highly glycosylated protein expressed on the surface of most leukocytes, including lymphocytes, neutrophils, monocytes, eosinophils, hematopoietic progenitor cells, and immature thymocytes (PMID: 1694883, 1688580). It mediates the binding of lymphocytes to high endothelial venules (HEV) of peripheral lymph nodes through interactions with a constitutively expressed ligand, and is also involved in lymphocyte, neutrophil, and monocyte attachment to endothelium at sites of inflammation (PMID: 1382078).

Notable Publications

Author	Pubmed ID	Journal	Application
Yang Chen	41773759	ACS Nano	WB,IF

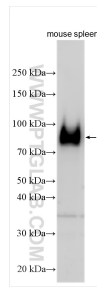
Storage

Storage:
Store at -20°C. Stable for one year after shipment.
Storage Buffer:
PBS with 0.02% sodium azide and 50% glycerol, pH7.3
Aliquoting is unnecessary for -20°C storage

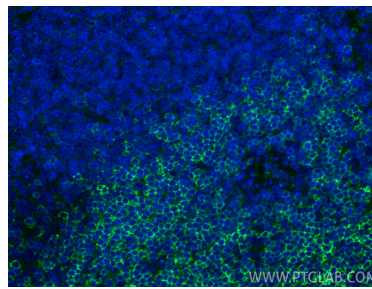
For technical support and original validation data for this product please contact:
T: 4006900926 E: Proteintech-CN@ptglab.com W: ptgcn.com

This product is exclusively available under Proteintech Group brand and is not available to purchase from any other manufacturer.

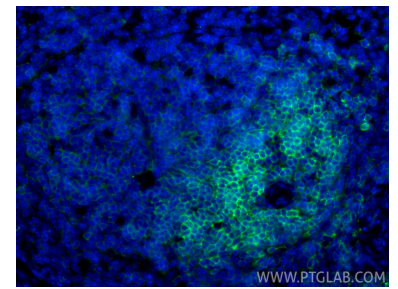
Selected Validation Data



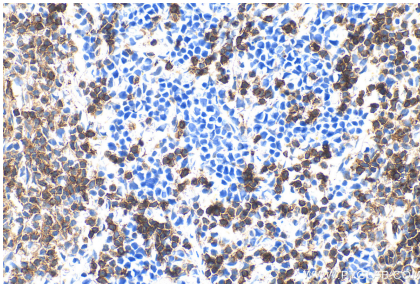
Mouse spleen tissue was subjected to SDS PAGE followed by western blot with 33173-1-AP (CD62L antibody) at dilution of 1:800 incubated at room temperature for 1.5 hours.



Immunofluorescent analysis of (4% PFA) fixed paraffin-embedded mouse spleen tissue using CD62L antibody (33173-1-AP) at dilution of 1:200 and CoraLite®488-Conjugated Goat Anti-Rabbit IgG(H+L) (SA00013-2). Heat mediated antigen retrieval with Tris-EDTA buffer (pH 9.0).



Immunofluorescent analysis of (4% PFA) fixed frozen OCT-embedded mouse spleen tissue using CD62L antibody (33173-1-AP) at dilution of 1:200 and CoraLite®488-Conjugated Goat Anti-Rabbit IgG(H+L) (SA00013-2).



Immunohistochemical analysis of paraffin-embedded mouse spleen tissue slide using 33173-1-AP (CD62L antibody) at dilution of 1:200 (under 40x lens). Heat mediated antigen retrieval with Tris-EDTA buffer (pH 9.0).