

For Research Use Only

# YM-1+YM-2 Polyclonal antibody

Catalog Number:33153-1-AP



## Basic Information

Catalog Number:

33153-1-AP

Concentration:

310 ug/ml

Source:

Rabbit

Isotype:

IgG

Immunogen Catalog Number:

AG39745

GenBank Accession Number:

NM\_009892

GeneID (NCBI):

12655

UNIPROT ID:

O35744

Full Name:

chitinase 3-like 3

Calculated MW:

44 kDa

Observed MW:

44 kDa

Purification Method:

Antigen affinity Purification

Recommended Dilutions:

WB: 1:5000-1:50000

## Applications

Tested Applications:

WB, ELISA

Species Specificity:

mouse

Positive Controls:

WB : mouse bone marrow, mouse spleen tissue

## Background Information

Chitinase-like protein 3 (Chil3), also called ECF-L or Ym1, is a member of chitinase-like protein family which has chemotactic activity for eosinophils (PMID: 27256220). CHIL3 promotes NSC self-renewal and commitment to the neuronal lineage. Endogenous expression of CHIL3 is observed in the neurogenic niche of the mouse brain and retina and in lesions of those injury models (PMID: 36368330). Chitinase-like protein 4 (Chil4), also called Ym2, regulates regeneration of the injured OE in vivo in both male and female mice and cell proliferation/differentiation in OE colonies in vitro (PMID: 34016714). This antibody detects both YM1 and YM2.

## Storage

Storage:

Store at -20°C. Stable for one year after shipment.

Storage Buffer:

PBS with 0.02% sodium azide and 50% glycerol, pH7.3

Aliquoting is unnecessary for -20°C storage

For technical support and original validation data for this product please contact:

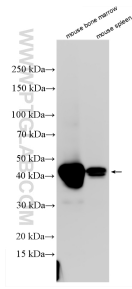
T: 4006900926

E: Proteintech-CN@ptglab.com

W: ptgcn.com

This product is exclusively available under Proteintech Group brand and is not available to purchase from any other manufacturer.

## Selected Validation Data



Various lysates were subjected to SDS PAGE followed by western blot with 33153-1-AP (YM-1+YM-2 antibody) at dilution of 1:10000 incubated at room temperature for 1.5 hours.