

For Research Use Only

XAGE2 Polyclonal antibody, PBS Only

Catalog Number: 33118-1-PBS



Basic Information

Catalog Number:

33118-1-PBS

Concentration:

1 mg/ml

Source:

Rabbit

Isotype:

IgG

Immunogen Catalog Number:

AG35814

GenBank Accession Number:

NM_130777

GeneID (NCBI):

9502

UNIPROT ID:

Q96GT9

Full Name:

X antigen family, member 2

Calculated MW:

12kDa

Observed MW:

20 kDa

Purification Method:

Antigen affinity Purification

Applications

Tested Applications:

WB, IF/ICC, Indirect ELISA

Species Specificity:

human

Background Information

XAGE2 (member 2 of the X antigen family), also known as CT12.2, GAGED3, XAGE-2, and XAGE2B, is a cancer-testis (CT) antigen that belongs to the GAGE family. This protein is strongly expressed in normal testes and is abnormally expressed in various tumors, including Ewing's sarcoma, rhabdomyosarcoma, breast cancer, and germ cell tumors. The XAGE2 protein shares sequence similarity with other GAGE/PAGE proteins, and its expression pattern and sequence similarity make it a member of the CT antigen family.

Storage

Storage:

Store at -80°C.

The product is shipped with ice packs. Upon receipt, store it immediately at -80°C

Storage Buffer:

PBS only, pH7.3

For technical support and original validation data for this product please contact:

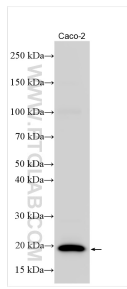
T: 4006900926

E: Proteintech-CN@ptglab.com

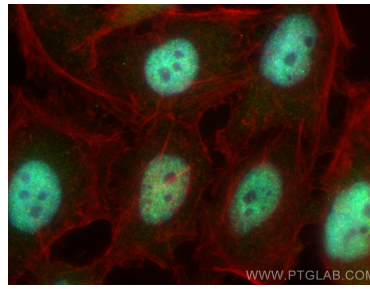
W: ptgcn.com

This product is exclusively available under Proteintech Group brand and is not available to purchase from any other manufacturer.

Selected Validation Data



Various lysates were subjected to SDS PAGE followed by western blot with 33118-1-AP (XAGE2 antibody) at dilution of 1:1000 incubated at room temperature for 1.5 hours. This data was developed using the same antibody clone with 33118-1-PBS in a different storage buffer formulation.



Immunofluorescent analysis of (4% PFA) fixed HeLa cells using XAGE2 antibody (33118-1-AP) at dilution of 1:400 and Coralite@488-Conjugated Goat Anti-Rabbit IgG(H+L) (SA00013-2), CL594-phalloidin (red). This data was developed using the same antibody clone with 33118-1-PBS in a different storage buffer formulation.