

For Research Use Only

# XAGE2 Polyclonal antibody

Catalog Number: 33118-1-AP



## Basic Information

<b>Catalog Number:</b> 33118-1-AP	<b>GenBank Accession Number:</b> NM_130777	<b>Purification Method:</b> Antigen affinity Purification
<b>Concentration:</b> 500 ug/ml	<b>GeneID (NCBI):</b> 9502	<b>Recommended Dilutions:</b> WB: 1:500-1:2000 IF/ICC: 1:200-1:800
<b>Source:</b> Rabbit	<b>UNIPROT ID:</b> Q96GT9	
<b>Isotype:</b> IgG	<b>Full Name:</b> X antigen family, member 2	
<b>Immunogen Catalog Number:</b> AG35814	<b>Calculated MW:</b> 12kDa	
	<b>Observed MW:</b> 20 kDa	

## Applications

<b>Tested Applications:</b> WB, IF/ICC, ELISA	<b>Positive Controls:</b>
<b>Species Specificity:</b> human	<b>WB :</b> Caco-2 cells, <b>IF/ICC :</b> HeLa cells,

## Background Information

XAGE2 (member 2 of the X antigen family), also known as CT12.2, GAGED3, XAGE-2, and XAGE2B, is a cancer-testis (CT) antigen that belongs to the GAGE family. This protein is strongly expressed in normal testes and is abnormally expressed in various tumors, including Ewing's sarcoma, rhabdomyosarcoma, breast cancer, and germ cell tumors. The XAGE2 protein shares sequence similarity with other GAGE/PAGE proteins, and its expression pattern and sequence similarity make it a member of the CT antigen family.

## Storage

**Storage:**  
Store at -20°C. Stable for one year after shipment.  
**Storage Buffer:**  
PBS with 0.02% sodium azide and 50% glycerol, pH7.3  
**Aliquoting is unnecessary for -20°C storage**

For technical support and original validation data for this product please contact:

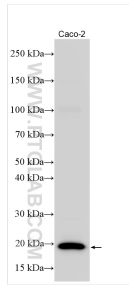
T: 4006900926

E: [Proteintech-CN@ptglab.com](mailto:Proteintech-CN@ptglab.com)

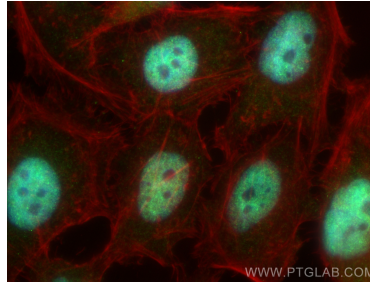
W: [ptgcn.com](http://ptgcn.com)

**This product is exclusively available under Proteintech Group brand and is not available to purchase from any other manufacturer.**

## Selected Validation Data



Various lysates were subjected to SDS PAGE followed by western blot with 33118-1-AP (XAGE2 antibody) at dilution of 1:1000 incubated at room temperature for 1.5 hours.



Immunofluorescent analysis of (4% PFA) fixed HeLa cells using XAGE2 antibody (33118-1-AP) at dilution of 1:400 and CoraLite®488-Conjugated Goat Anti-Rabbit IgG(H+L) (SA00013-2), CL594-phalloidin (red).